



[Go to Product page](#)

Datasheet for ABIN6261996  
**anti-SLC2A2 antibody (N-Term)**

2 Images

Overview

Quantity:	100 µL
Target:	SLC2A2
Binding Specificity:	N-Term
Reactivity:	Human, Rat, Mouse
Host:	Rabbit
Clonality:	Polyclonal
Conjugate:	This SLC2A2 antibody is un-conjugated
Application:	Western Blotting (WB), ELISA, Immunohistochemistry (IHC)

Product Details

Immunogen:	A synthesized peptide derived from human GLUT2, corresponding to a region within N-terminal amino acids.
Isotype:	IgG
Specificity:	GLUT2 Antibody detects endogenous levels of total GLUT2.
Purification:	The antiserum was purified by peptide affinity chromatography using SulfoLink™ Coupling Resin (Thermo Fisher Scientific).

Target Details

Target:	SLC2A2
Alternative Name:	SLC2A2 ( <a href="#">SLC2A2 Products</a> )

## Target Details

---

Background:	Description: Facilitative glucose transporter. This isoform likely mediates the bidirectional transfer of glucose across the plasma membrane of hepatocytes and is responsible for uptake of glucose by the beta cells, may comprise part of the glucose-sensing mechanism of the beta cell. May also participate with the Na <sup>+</sup> /glucose cotransporter in the transcellular transport of glucose in the small intestine and kidney. Gene: SLC2A2
Molecular Weight:	57 kDa.
Gene ID:	6514
UniProt:	<a href="#">P11168</a>
Pathways:	<a href="#">Warburg Effect</a>

## Application Details

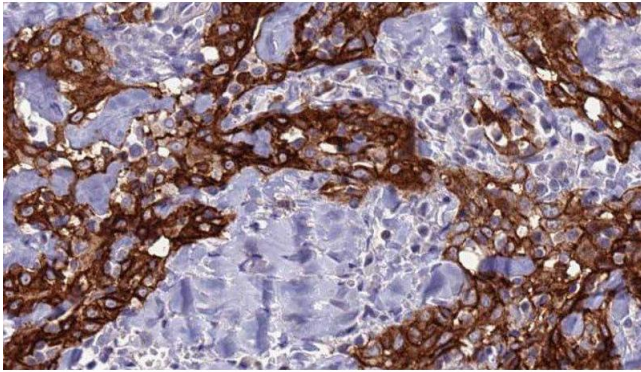
---

Application Notes:	WB 1:1000-3000, IHC 1:200, ELISA(peptide) 1:20000-1:40000
Restrictions:	For Research Use only

## Handling

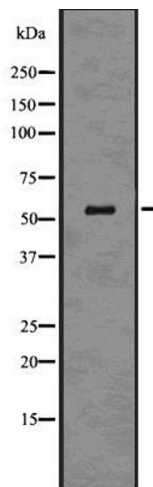
---

Format:	Liquid
Concentration:	1 mg/mL
Buffer:	Rabbit IgG in phosphate buffered saline , pH 7.4, 150 mM NaCl, 0.02 % sodium azide and 50 % glycerol.
Preservative:	Sodium azide
Precaution of Use:	This product contains Sodium azide: a POISONOUS AND HAZARDOUS SUBSTANCE which should be handled by trained staff only.
Storage:	-20 °C
Storage Comment:	Store at -20 °C. Stable for 12 months from date of receipt.
Expiry Date:	12 months



### Immunohistochemistry

**Image 1.** ABIN6277723 at 1/100 staining Human Head and neck cancer tissue by IHC-P. The sample was formaldehyde fixed and a heat mediated antigen retrieval step in citrate buffer was performed. The sample was then blocked and incubated with the antibody for 1.5 hours at 22°C. An HRP conjugated goat anti-rabbit antibody was used as the secondary



### Western Blotting

**Image 2.** Western blot analysis glut2 using HUVEC whole cell lysates