

Datasheet for ABIN6262009

**anti-GNAO1 antibody (Internal Region)****2** Images[Go to Product page](#)

## Overview

Quantity:	100 µL
Target:	GNAO1
Binding Specificity:	Internal Region
Reactivity:	Mouse, Human, Rat
Host:	Rabbit
Clonality:	Polyclonal
Conjugate:	This GNAO1 antibody is un-conjugated
Application:	Western Blotting (WB), ELISA, Immunohistochemistry (IHC)

## Product Details

Immunogen:	A synthesized peptide derived from human GNAO1, corresponding to a region within the internal amino acids.
Isotype:	IgG
Specificity:	GNAO1 Antibody detects endogenous levels of total GNAO1.
Predicted Reactivity:	Pig,Bovine,Horse,Sheep,Rabbit,Dog,Chicken,Xenopus
Purification:	The antiserum was purified by peptide affinity chromatography using SulfoLink™ Coupling Resin (Thermo Fisher Scientific).

## Target Details

Target:	GNAO1
---------	-------

## Target Details

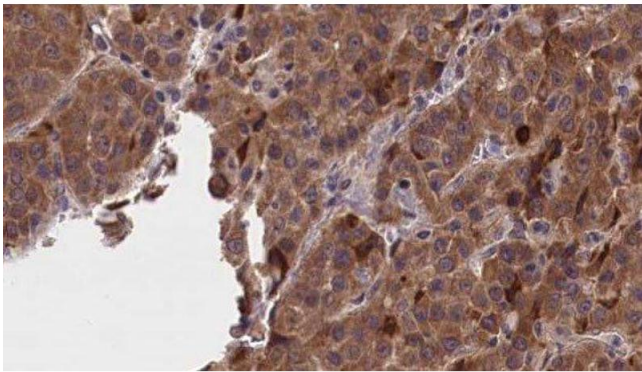
Alternative Name:	GNAO1 ( <a href="#">GNAO1 Products</a> )
Background:	Description: Guanine nucleotide-binding proteins (G proteins) are involved as modulators or transducers in various transmembrane signaling systems. The G(o) protein function is not clear. Stimulated by RGS14. Gene: GNAO1
Molecular Weight:	40kDa
Gene ID:	2775
UniProt:	<a href="#">P09471</a>
Pathways:	<a href="#">G-protein mediated Events</a>

## Application Details

Application Notes:	WB 1:500-1:2000, IHC 1:50-1:200, ELISA(peptide) 1:20000-1:40000
Restrictions:	For Research Use only

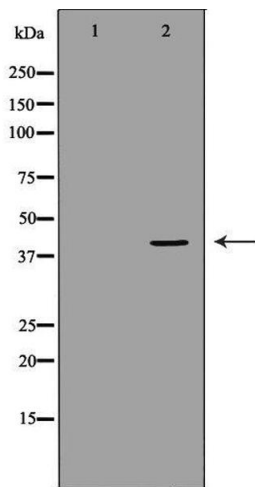
## Handling

Format:	Liquid
Concentration:	1 mg/mL
Buffer:	Rabbit IgG in phosphate buffered saline , pH 7.4, 150 mM NaCl, 0.02 % sodium azide and 50 % glycerol.
Preservative:	Sodium azide
Precaution of Use:	This product contains Sodium azide: a POISONOUS AND HAZARDOUS SUBSTANCE which should be handled by trained staff only.
Storage:	-20 °C
Storage Comment:	Store at -20 °C. Stable for 12 months from date of receipt.
Expiry Date:	12 months



### Immunohistochemistry

**Image 1.** ABIN6277234 at 1/100 staining Human liver cancer tissue by IHC-P. The sample was formaldehyde fixed and a heat mediated antigen retrieval step in citrate buffer was performed. The sample was then blocked and incubated with the antibody for 1.5 hours at 22°C. An HRP conjugated goat anti-rabbit antibody was used as the secondary



### Western Blotting

**Image 2.** Western blot analysis of Hela whole cell lysates, using GNAO1 Antibody. The lane on the left is treated with the antigen-specific peptide.