



[Go to Product page](#)

Datasheet for ABIN6262026
anti-GNRH1 antibody

2 Images

Overview

Quantity:	100 µL
Target:	GNRH1
Reactivity:	Human, Rat, Mouse
Host:	Rabbit
Clonality:	Polyclonal
Conjugate:	This GNRH1 antibody is un-conjugated
Application:	Immunohistochemistry (IHC), Western Blotting (WB), ELISA

Product Details

Immunogen:	A synthesized peptide derived from human GnRH I
Isotype:	IgG
Specificity:	GnRH I Antibody detects endogenous levels of total GnRH I
Cross-Reactivity:	Human, Mouse (Murine), Rat (Rattus)
Purification:	The antiserum was purified by peptide affinity chromatography using SulfoLink™ Coupling Resin (Thermo Fisher Scientific).

Target Details

Target:	GNRH1
Alternative Name:	GnRH I (GNRH1 Products)
Background:	Description: Stimulates the secretion of gonadotropins, it stimulates the secretion of both

Target Details

lutinizing and follicle-stimulating hormones.

Gene: GNRH1

Molecular Weight: 10 kDa

Gene ID: 2796

UniProt: [P01148](#)

Pathways: [Hormone Activity](#)

Application Details

Application Notes: WB 1:1000-3000 IHC 1:200

Restrictions: For Research Use only

Handling

Format: Liquid

Concentration: 1 mg/mL

Buffer: Rabbit IgG in phosphate buffered saline , pH 7.4, 150 mM NaCl, 0.02 % sodium azide and 50 % glycerol.

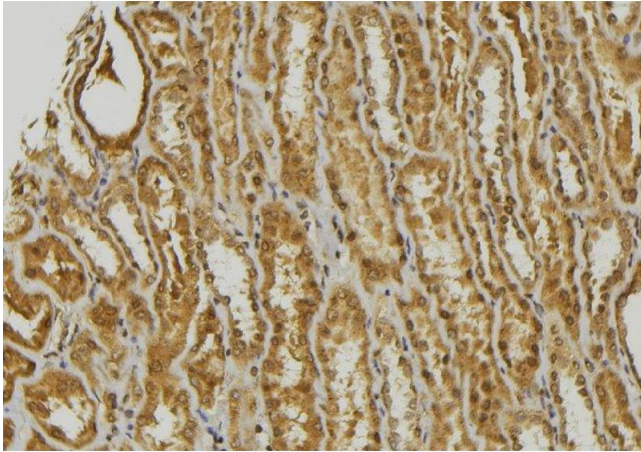
Preservative: Sodium azide

Precaution of Use: This product contains Sodium azide: a POISONOUS AND HAZARDOUS SUBSTANCE which should be handled by trained staff only.

Storage: -20 °C

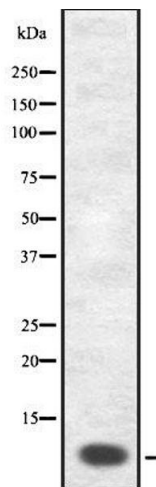
Storage Comment: Store at -20 °C.Stable for 12 months from date of receipt

Expiry Date: 12 months



Immunohistochemistry

Image 1. ABIN6278470 at 1/100 staining Mouse kidney tissue by IHC-P. The sample was formaldehyde fixed and a heat mediated antigen retrieval step in citrate buffer was performed. The sample was then blocked and incubated with the antibody for 1.5 hours at 22°C. An HRP conjugated goat anti-rabbit antibody was used as the secondary



Western Blotting

Image 2. Western blot analysis GnRH I using COS7 whole cell lysates