



[Go to Product page](#)

Datasheet for ABIN6262043  
**anti-GPD2 antibody (N-Term)**

2 Images

Overview

Quantity:	100 µL
Target:	GPD2
Binding Specificity:	N-Term
Reactivity:	Human, Mouse, Rat
Host:	Rabbit
Clonality:	Polyclonal
Conjugate:	This GPD2 antibody is un-conjugated
Application:	Western Blotting (WB), Immunohistochemistry (IHC), Immunocytochemistry (ICC), Immunofluorescence (IF)

Product Details

Immunogen:	A synthesized peptide derived from human GPD2, corresponding to a region within N-terminal amino acids.
Isotype:	IgG
Specificity:	GPD2 Antibody detects endogenous levels of total GPD2.
Predicted Reactivity:	Zebrafish,Bovine,Horse,Sheep,Rabbit,Dog,Chicken,Xenopus
Purification:	The antiserum was purified by peptide affinity chromatography using SulfoLink™ Coupling Resin (Thermo Fisher Scientific).

Target Details

Target:	GPD2
---------	------

## Target Details

---

Alternative Name:	<a href="#">GPD2 (GPD2 Products)</a>
Background:	Description: sn-glycerol 3-phosphate + a quinone = glycerone phosphate + a quinol. Gene: GPD2
Molecular Weight:	68 kDa
Gene ID:	2820
UniProt:	<a href="#">P43304</a>

## Application Details

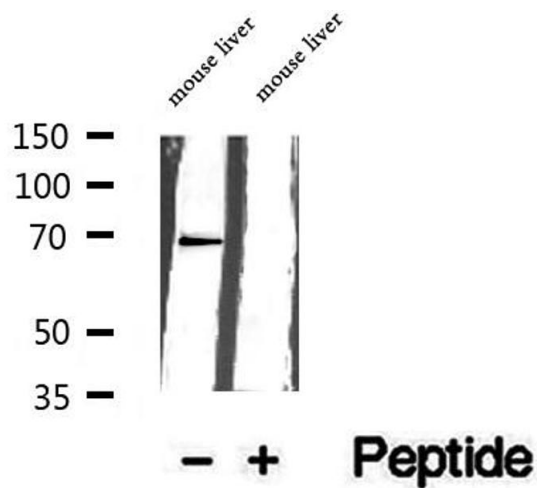
---

Application Notes:	WB 1:500-1:2000, IHC 1:50-1:200, IF/ICC 1:100-1:500
Restrictions:	For Research Use only

## Handling

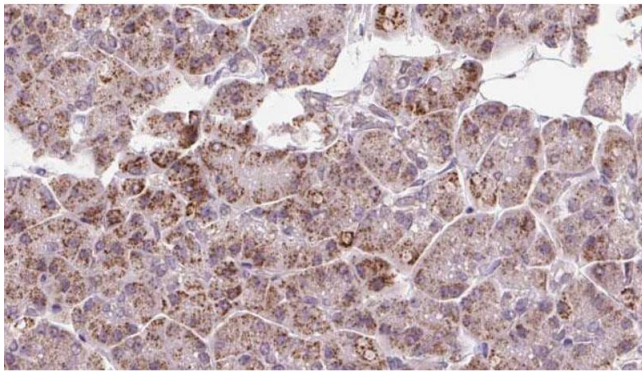
---

Format:	Liquid
Concentration:	1 mg/mL
Buffer:	Rabbit IgG in phosphate buffered saline , pH 7.4, 150 mM NaCl, 0.02 % sodium azide and 50 % glycerol.
Preservative:	Sodium azide
Precaution of Use:	This product contains Sodium azide: a POISONOUS AND HAZARDOUS SUBSTANCE which should be handled by trained staff only.
Storage:	-20 °C
Storage Comment:	Store at -20 °C. Stable for 12 months from date of receipt.
Expiry Date:	12 months



### Western Blotting

**Image 1.** Western blot analysis of extracts of mouse liver tissue, using GPD2 antibody.



### Immunohistochemistry

**Image 2.** ABIN6273250 at 1/100 staining Human pancreas cancer tissue by IHC-P. The sample was formaldehyde fixed and a heat mediated antigen retrieval step in citrate buffer was performed. The sample was then blocked and incubated with the antibody for 1.5 hours at 22°C. An HRP conjugated goat anti-rabbit antibody was used as the secondary.