

Datasheet for ABIN6262047
anti-GPM6B antibody (N-Term)[Go to Product page](#)

1 Image

Overview

| | |
|----------------------|--|
| Quantity: | 100 µL |
| Target: | GPM6B |
| Binding Specificity: | N-Term |
| Reactivity: | Human, Mouse, Rat |
| Host: | Rabbit |
| Clonality: | Polyclonal |
| Application: | Western Blotting (WB), ELISA, Immunohistochemistry (IHC) |

Product Details

| | |
|-----------------------|---|
| Immunogen: | A synthesized peptide derived from human GPM6B, corresponding to a region within N-terminal amino acids. |
| Isotype: | IgG |
| Specificity: | GPM6B Antibody detects endogenous levels of total GPM6B. |
| Predicted Reactivity: | Pig,Bovine,Horse,Sheep |
| Purification: | The antiserum was purified by peptide affinity chromatography using SulfoLink™ Coupling Resin (Thermo Fisher Scientific). |

Target Details

| | |
|-------------------|--|
| Target: | GPM6B |
| Alternative Name: | GPM6B (GPM6B Products) |

Target Details

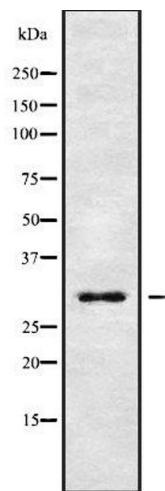
| | |
|-------------------|--|
| Background: | Description: May be involved in neural development. Involved in regulation of osteoblast function and bone formation. Involved in matrix vesicle release by osteoblasts, this function seems to involve maintenance of the actin cytoskeleton. May be involved in cellular trafficking of SERT and thereby in regulation of serotonin uptake. Gene: GPM6B |
| Molecular Weight: | 29 kDa |
| Gene ID: | 2824 |
| UniProt: | Q13491 |

Application Details

| | |
|--------------------|--|
| Application Notes: | WB 1:1000-3000, IHC 1:50-1:200, ELISA(peptide) 1:20000-1:40000 |
| Restrictions: | For Research Use only |

Handling

| | |
|--------------------|--|
| Format: | Liquid |
| Concentration: | 1 mg/mL |
| Buffer: | Rabbit IgG in phosphate buffered saline , pH 7.4, 150 mM NaCl, 0.02 % sodium azide and 50 % glycerol. |
| Preservative: | Sodium azide |
| Precaution of Use: | This product contains Sodium azide: a POISONOUS AND HAZARDOUS SUBSTANCE which should be handled by trained staff only. |
| Storage: | -20 °C |
| Storage Comment: | Store at -20 °C. Stable for 12 months from date of receipt. |
| Expiry Date: | 12 months |



Western Blotting

Image 1. Western blot analysis GPM6B using Jurkat whole cell lysates