

Datasheet for ABIN6262048  
**anti-QRFPR antibody (Internal Region)**[Go to Product page](#)

## 2 Images

## Overview

Quantity:	100 µL
Target:	QRFPR
Binding Specificity:	Internal Region
Reactivity:	Human, Mouse, Rat
Host:	Rabbit
Clonality:	Polyclonal
Conjugate:	This QRFPR antibody is un-conjugated
Application:	Western Blotting (WB), ELISA, Immunofluorescence (IF), Immunohistochemistry (IHC), Immunocytochemistry (ICC)

## Product Details

Immunogen:	A synthesized peptide derived from human GPR103, corresponding to a region within the internal amino acids.
Isotype:	IgG
Specificity:	GPR103 Antibody detects endogenous levels of total GPR103.
Predicted Reactivity:	Pig,Bovine,Horse,Sheep,Rabbit,Dog,Xenopus
Purification:	The antiserum was purified by peptide affinity chromatography using SulfoLink™ Coupling Resin (Thermo Fisher Scientific).

## Target Details

Target:	QRFPR
---------	-------

## Target Details

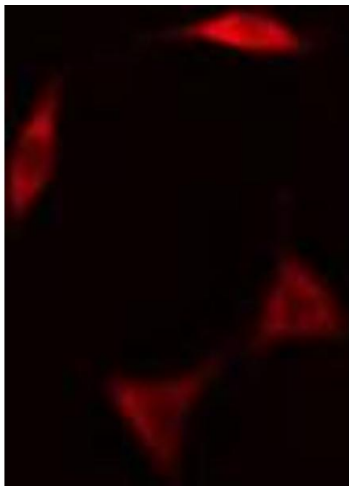
Alternative Name:	QRFPR ( <a href="#">QRFPR Products</a> )
Background:	<p>Description: Receptor for the orexigenic neuropeptide QRF. The activity of this receptor is mediated by G proteins that modulate adenylate cyclase activity and intracellular calcium levels.</p> <p>Gene: QRFPR</p>
Molecular Weight:	49 kDa
Gene ID:	84109
UniProt:	<a href="#">Q96P65</a>

## Application Details

Application Notes:	WB 1:500-1:2000, IF/ICC 1:100-1:500, IHC 1:50-1:200, ELISA(peptide) 1:20000-1:40000
Restrictions:	For Research Use only

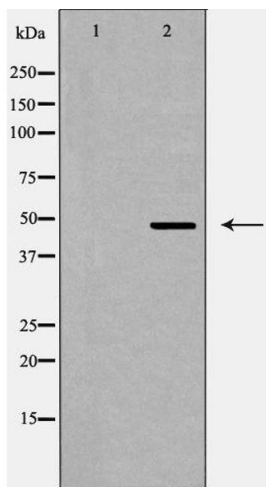
## Handling

Format:	Liquid
Concentration:	1 mg/mL
Buffer:	Rabbit IgG in phosphate buffered saline , pH 7.4, 150 mM NaCl, 0.02 % sodium azide and 50 % glycerol.
Preservative:	Sodium azide
Precaution of Use:	This product contains Sodium azide: a POISONOUS AND HAZARDOUS SUBSTANCE which should be handled by trained staff only.
Storage:	-20 °C
Storage Comment:	Store at -20 °C. Stable for 12 months from date of receipt.
Expiry Date:	12 months



Immunofluorescence (fixed cells)

**Image 1.** ABIN6268844 staining NCI-H460 cells by IF/ICC. The sample were fixed with PFA and permeabilized in 0.1% Triton X-100,then blocked in 10% serum for 45 minutes at 25°C. The primary antibody was diluted at 1/200 and incubated with the sample for 1 hour at 37°C. An Alexa Fluor 594 conjugated goat anti-rabbit IgG (H+L) antibody(Cat.# S0006), diluted at 1/600, was used as secondary antibody.



Western Blotting

**Image 2.** Western blot analysis of GPR103 expression in LOVO cells.The lane on the left is treated with the antigen-specific peptide.