

Datasheet for ABIN6262053
anti-GPR124 antibody (C-Term)[Go to Product page](#)

1 Image

Overview

Quantity:	100 µL
Target:	GPR124
Binding Specificity:	C-Term
Reactivity:	Human
Host:	Rabbit
Clonality:	Polyclonal
Conjugate:	This GPR124 antibody is un-conjugated
Application:	ELISA, Western Blotting (WB), Immunohistochemistry (IHC), Immunofluorescence (IF), Immunocytochemistry (ICC)

Product Details

Immunogen:	A synthesized peptide derived from human GPR124, corresponding to a region within C-terminal amino acids.
Isotype:	IgG
Specificity:	GPR124 Antibody detects endogenous levels of total GPR124.
Predicted Reactivity:	Pig,Bovine,Rabbit,Dog
Purification:	The antiserum was purified by peptide affinity chromatography using SulfoLink™ Coupling Resin (Thermo Fisher Scientific).

Target Details

Target:	GPR124
---------	--------

Target Details

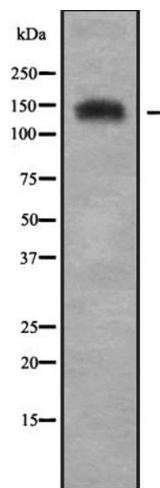
Alternative Name:	ADGRA2 (GPR124 Products)
Background:	<p>Description: Endothelial receptor which functions as a WNT7-specific coactivator of canonical Wnt signaling (By similarity). Required for normal endothelial cell sprouting and migration in the forebrain and neural tube (By similarity). Has a major role in establishing the blood-brain barrier (By similarity). Binds to the glycosaminoglycans heparin, heparin sulfate, chondroitin sulfate and dermatan sulfate (PubMed:16982628).</p> <p>Gene: ADGRA2</p>
Molecular Weight:	145kDa
Gene ID:	25960
UniProt:	Q96PE1

Application Details

Application Notes:	WB 1:1000, IF/ICC 1:100-1:500, IHC 1:50-1:200, ELISA(peptide) 1:20000-1:40000
Restrictions:	For Research Use only

Handling

Format:	Liquid
Concentration:	1 mg/mL
Buffer:	Rabbit IgG in phosphate buffered saline , pH 7.4, 150 mM NaCl, 0.02 % sodium azide and 50 % glycerol.
Preservative:	Sodium azide
Precaution of Use:	This product contains Sodium azide: a POISONOUS AND HAZARDOUS SUBSTANCE which should be handled by trained staff only.
Storage:	-20 °C
Storage Comment:	Store at -20 °C. Stable for 12 months from date of receipt.
Expiry Date:	12 months



Western Blotting

Image 1. Western blot analysis GPR124 using LOVO whole cell lysates