



[Go to Product page](#)

Datasheet for ABIN6262060

anti-GPR85 antibody (Internal Region)

2 Images

Overview

Quantity:	100 µL
Target:	GPR85
Binding Specificity:	Internal Region
Reactivity:	Human, Mouse, Rat
Host:	Rabbit
Clonality:	Polyclonal
Conjugate:	This GPR85 antibody is un-conjugated
Application:	ELISA, Western Blotting (WB)

Product Details

Immunogen:	A synthesized peptide derived from human GPR85, corresponding to a region within the internal amino acids.
Isotype:	IgG
Specificity:	GPR85 Antibody detects endogenous levels of total GPR85.
Predicted Reactivity:	Pig,Zebrafish,Horse,Sheep,Rabbit,Dog,Chicken,Xenopus
Purification:	The antiserum was purified by peptide affinity chromatography using SulfoLink™ Coupling Resin (Thermo Fisher Scientific).

Target Details

Target:	GPR85
---------	-------

Target Details

Alternative Name: GPR85 ([GPR85 Products](#))

Background: Description: Orphan receptor.
Gene: GPR85

Molecular Weight: 42 kDa

Gene ID: 54329

UniProt: [P60893](#)

Application Details

Application Notes: WB 1:1000-3000, ELISA(peptide) 1:20000-1:40000

Restrictions: For Research Use only

Handling

Format: Liquid

Concentration: 1 mg/mL

Buffer: Rabbit IgG in phosphate buffered saline , pH 7.4, 150 mM NaCl, 0.02 % sodium azide and 50 % glycerol.

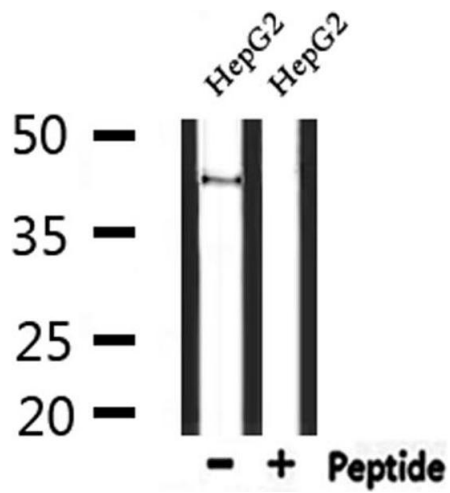
Preservative: Sodium azide

Precaution of Use: This product contains Sodium azide: a POISONOUS AND HAZARDOUS SUBSTANCE which should be handled by trained staff only.

Storage: -20 °C

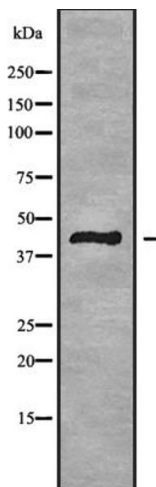
Storage Comment: Store at -20 °C. Stable for 12 months from date of receipt.

Expiry Date: 12 months



Western Blotting

Image 1. Western blot analysis of extracts from HepG2, using GPR85 Antibody.



Western Blotting

Image 2. Western blot analysis GPR85 using HeLa whole cell lysates