

Datasheet for ABIN6262062

anti-GPRC5C antibody**2** Images[Go to Product page](#)

Overview

Quantity:	100 µL
Target:	GPRC5C
Reactivity:	Human, Mouse, Rat
Host:	Rabbit
Clonality:	Polyclonal
Conjugate:	This GPRC5C antibody is un-conjugated
Application:	Western Blotting (WB), ELISA, Immunofluorescence (IF), Immunocytochemistry (ICC)

Product Details

Immunogen:	A synthesized peptide derived from human GPRC5C
Isotype:	IgG
Specificity:	GPRC5C Antibody detects endogenous levels of total GPRC5C
Cross-Reactivity:	Human, Mouse (Murine), Rat (Rattus)
Purification:	The antiserum was purified by peptide affinity chromatography using SulfoLink™ Coupling Resin (Thermo Fisher Scientific).

Target Details

Target:	GPRC5C
Alternative Name:	GPRC5C (GPRC5C Products)
Background:	Description: This retinoic acid-inducible G-protein coupled receptor provide evidence for a

Target Details

possible interaction between retinoid and G-protein signaling pathways.

Gene: GPRC5C

Molecular Weight: 48kDa

Gene ID: 55890

UniProt: [Q9NQ84](#)

Application Details

Application Notes: WB 1:1000, IF/ICC 1:100-1:500

Restrictions: For Research Use only

Handling

Format: Liquid

Concentration: 1 mg/mL

Buffer: Rabbit IgG in phosphate buffered saline , pH 7.4, 150 mM NaCl, 0.02 % sodium azide and 50 % glycerol.

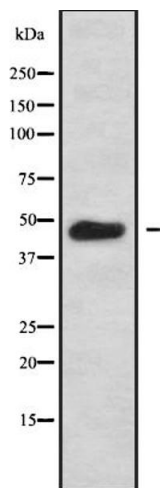
Preservative: Sodium azide

Precaution of Use: This product contains Sodium azide: a POISONOUS AND HAZARDOUS SUBSTANCE which should be handled by trained staff only.

Storage: -20 °C

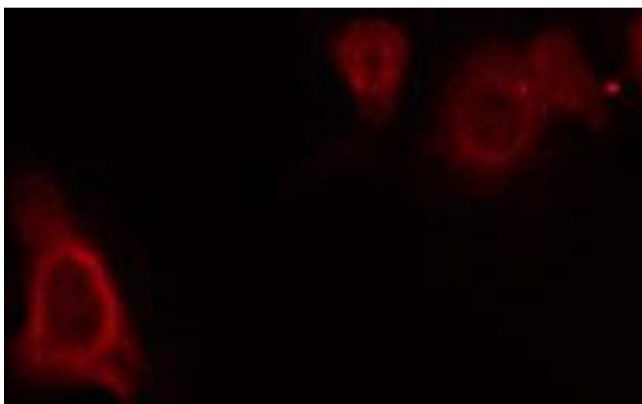
Storage Comment: Store at -20 °C.Stable for 12 months from date of receipt

Expiry Date: 12 months



Western Blotting

Image 1. Western blot analysis GPRC5C using COS7 whole cell lysates



Immunofluorescence (fixed cells)

Image 2. ABIN6272310 staining RAW264.7 by IF/ICC. The sample were fixed with PFA and permeabilized in 0.1% Triton X-100, then blocked in 10% serum for 45 minutes at 25°C. The primary antibody was diluted at 1/200 and incubated with the sample for 1 hour at 37°C. An Alexa Fluor 594 conjugated goat anti-rabbit IgG (H+L) Ab, diluted at 1/600, was used as the secondary antibody.