



Datasheet for ABIN6262066
anti-GPSM3 antibody (C-Term)



[Go to Product page](#)

2 Images

Overview

Quantity:	100 µL
Target:	GPSM3
Binding Specificity:	C-Term
Reactivity:	Human, Mouse, Rat
Host:	Rabbit
Clonality:	Polyclonal
Conjugate:	This GPSM3 antibody is un-conjugated
Application:	ELISA, Western Blotting (WB)

Product Details

Immunogen:	A synthesized peptide derived from human GPSM3, corresponding to a region within C-terminal amino acids.
Isotype:	IgG
Specificity:	GPSM3 Antibody detects endogenous levels of total GPSM3.
Predicted Reactivity:	Pig,Horse,Sheep,Dog
Purification:	The antiserum was purified by peptide affinity chromatography using SulfoLink™ Coupling Resin (Thermo Fisher Scientific).

Target Details

Target:	GPSM3
---------	-------

Target Details

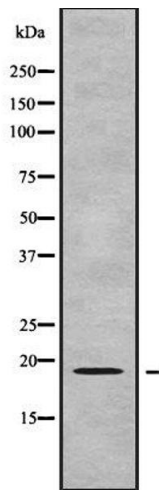
Alternative Name:	GPSM3 (GPSM3 Products)
Background:	Description: Interacts with subunit of G(i) alpha proteins and regulates the activation of G(i) alpha proteins. Gene: GPSM3
Molecular Weight:	18 kDa
Gene ID:	63940
UniProt:	Q9Y4H4

Application Details

Application Notes:	WB 1:1000-3000, ELISA(peptide) 1:20000-1:40000
Restrictions:	For Research Use only

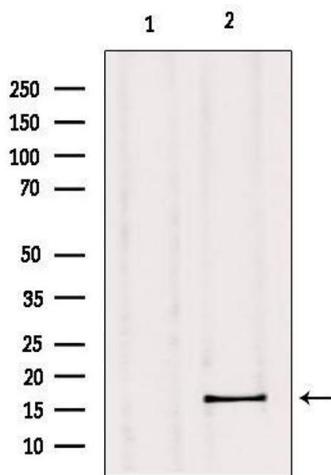
Handling

Format:	Liquid
Concentration:	1 mg/mL
Buffer:	Rabbit IgG in phosphate buffered saline , pH 7.4, 150 mM NaCl, 0.02 % sodium azide and 50 % glycerol.
Preservative:	Sodium azide
Precaution of Use:	This product contains Sodium azide: a POISONOUS AND HAZARDOUS SUBSTANCE which should be handled by trained staff only.
Storage:	-20 °C
Storage Comment:	Store at -20 °C. Stable for 12 months from date of receipt.
Expiry Date:	12 months



Western Blotting

Image 1. Western blot analysis GPSM3 using COLO205 whole cell lysates



Western Blotting

Image 2. Western blot analysis of extracts from mouse muscle, using GPSM3 Antibody. Lane 1 was treated with the blocking peptide.