



[Go to Product page](#)

Datasheet for ABIN6262128

anti-GTPBP5 antibody (Internal Region)

1 Image

Overview

Quantity:	100 µL
Target:	GTPBP5
Binding Specificity:	Internal Region
Reactivity:	Human, Mouse, Rat
Host:	Rabbit
Clonality:	Polyclonal
Conjugate:	This GTPBP5 antibody is un-conjugated
Application:	Western Blotting (WB), ELISA, Immunocytochemistry (ICC), Immunofluorescence (IF)

Product Details

Immunogen:	A synthesized peptide derived from human GTPBP5, corresponding to a region within the internal amino acids.
Isotype:	IgG
Specificity:	GTPBP5 Antibody detects endogenous levels of total GTPBP5.
Predicted Reactivity:	Pig,Horse,Chicken
Purification:	The antiserum was purified by peptide affinity chromatography using SulfoLink™ Coupling Resin (Thermo Fisher Scientific).

Target Details

Target:	GTPBP5
---------	--------

Target Details

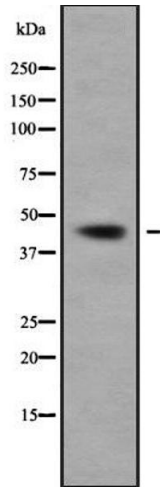
Alternative Name:	MTG2 (GTPBP5 Products)
Background:	Description: Plays a role in the regulation of the mitochondrial ribosome assembly and of translational activity. Displays GTPase activity. Involved in the ribosome maturation process. Gene: MTG2
Molecular Weight:	44 kDa
Gene ID:	26164
UniProt:	Q9H4K7

Application Details

Application Notes:	WB 1:1000-3000, IF/ICC 1:100-1:500, ELISA(peptide) 1:20000-1:40000
Restrictions:	For Research Use only

Handling

Format:	Liquid
Concentration:	1 mg/mL
Buffer:	Rabbit IgG in phosphate buffered saline , pH 7.4, 150 mM NaCl, 0.02 % sodium azide and 50 % glycerol.
Preservative:	Sodium azide
Precaution of Use:	This product contains Sodium azide: a POISONOUS AND HAZARDOUS SUBSTANCE which should be handled by trained staff only.
Storage:	-20 °C
Storage Comment:	Store at -20 °C. Stable for 12 months from date of receipt.
Expiry Date:	12 months



Western Blotting

Image 1. Western blot analysis GTPBP5 using RAW264.7 whole cell lysates