

Datasheet for ABIN6262168  
**anti-HCN2 antibody (Internal Region)**[Go to Product page](#)

## 3 Images

## Overview

Quantity:	100 µL
Target:	HCN2
Binding Specificity:	Internal Region
Reactivity:	Human, Rat, Mouse
Host:	Rabbit
Clonality:	Polyclonal
Conjugate:	This HCN2 antibody is un-conjugated
Application:	Western Blotting (WB), ELISA, Immunofluorescence (IF), Immunocytochemistry (ICC)

## Product Details

Immunogen:	A synthesized peptide derived from human HCN2, corresponding to a region within the internal amino acids.
Isotype:	IgG
Specificity:	HCN2 Antibody detects endogenous levels of total HCN2.
Predicted Reactivity:	Pig,Bovine,Sheep,Dog,Chicken
Purification:	The antiserum was purified by peptide affinity chromatography using SulfoLink™ Coupling Resin (Thermo Fisher Scientific).

## Target Details

Target:	HCN2
---------	------

## Target Details

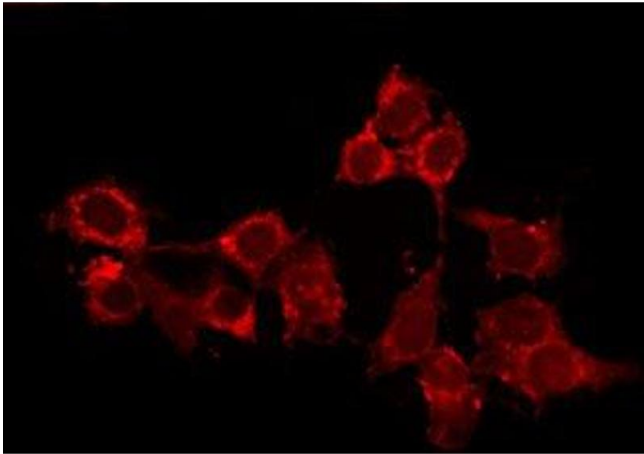
Alternative Name:	HCN2 ( <a href="#">HCN2 Products</a> )
Background:	<p>Description: Hyperpolarization-activated ion channel exhibiting weak selectivity for potassium over sodium ions. Contributes to the native pacemaker currents in heart (If) and in neurons (Ih). Can also transport ammonium in the distal nephron. Produces a large instantaneous current. Modulated by intracellular chloride ions and pH, acidic pH shifts the activation to more negative voltages (By similarity).</p> <p>Gene: HCN2</p>
Molecular Weight:	96 kDa
Gene ID:	610
UniProt:	<a href="#">Q9UL51</a>

## Application Details

Application Notes:	WB 1:1000-3000, IF/ICC 1:100-1:500, ELISA(peptide) 1:20000-1:40000
Restrictions:	For Research Use only

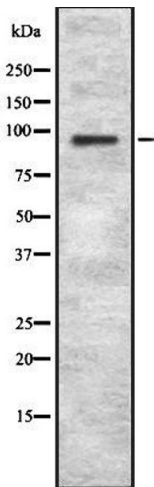
## Handling

Format:	Liquid
Concentration:	1 mg/mL
Buffer:	Rabbit IgG in phosphate buffered saline, pH 7.4, 150 mM NaCl, 0.02 % sodium azide and 50 % glycerol.
Preservative:	Sodium azide
Precaution of Use:	This product contains Sodium azide: a POISONOUS AND HAZARDOUS SUBSTANCE which should be handled by trained staff only.
Storage:	-20 °C
Storage Comment:	Store at -20 °C. Stable for 12 months from date of receipt.
Expiry Date:	12 months



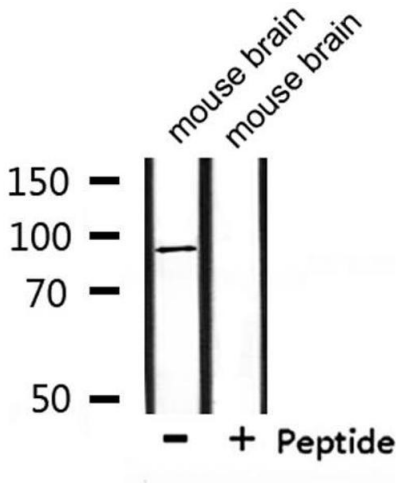
**Immunofluorescence (fixed cells)**

**Image 1.** ABIN6278577 staining Hela by IF/ICC. The sample were fixed with PFA and permeabilized in 0.1% Triton X-100, then blocked in 10% serum for 45 minutes at 25°C. The primary antibody was diluted at 1/200 and incubated with the sample for 1 hour at 37°C. An Alexa Fluor 594 conjugated goat anti-rabbit IgG (H+L) Ab, diluted at 1/600, was used as the secondary antibody



**Western Blotting**

**Image 2.** Western blot analysis of HCN2 using COLO205 whole cell lysates



**Western Blotting**

**Image 3.** Western blot analysis of extracts from mouse brain, using HCN2 Antibody.