



[Go to Product page](#)

Datasheet for ABIN6262205
anti-HEPACAM antibody (C-Term)

3 Images

Overview

Quantity:	100 µL
Target:	HEPACAM
Binding Specificity:	C-Term
Reactivity:	Human, Mouse, Rat
Host:	Rabbit
Clonality:	Polyclonal
Conjugate:	This HEPACAM antibody is un-conjugated
Application:	Western Blotting (WB), Immunohistochemistry (IHC)

Product Details

Immunogen:	A synthesized peptide derived from human HEPACAM, corresponding to a region within C-terminal amino acids.
Isotype:	IgG
Specificity:	HEPACAM Antibody detects endogenous levels of total HEPACAM.
Predicted Reactivity:	Pig,Zebrafish,Bovine,Horse,Sheep,Rabbit,Dog
Purification:	The antiserum was purified by peptide affinity chromatography using SulfoLink™ Coupling Resin (Thermo Fisher Scientific).

Target Details

Target:	HEPACAM
---------	---------

Target Details

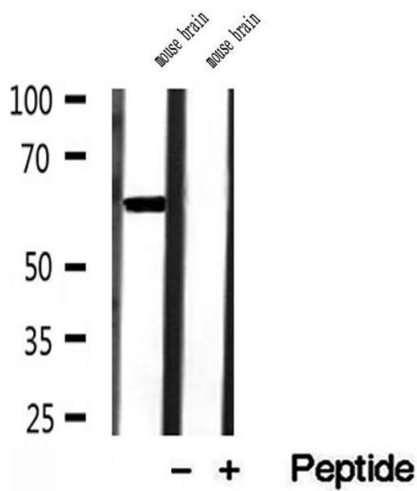
Alternative Name:	HEPACAM (HEPACAM Products)
Background:	Description: Involved in regulating cell motility and cell-matrix interactions. May inhibit cell growth through suppression of cell proliferation. Gene: HEPACAM
Molecular Weight:	46-72 kDa
Gene ID:	220296
UniProt:	Q14CZ8

Application Details

Application Notes:	WB 1:500-1:2000, IHC 1:50-1:200
Restrictions:	For Research Use only

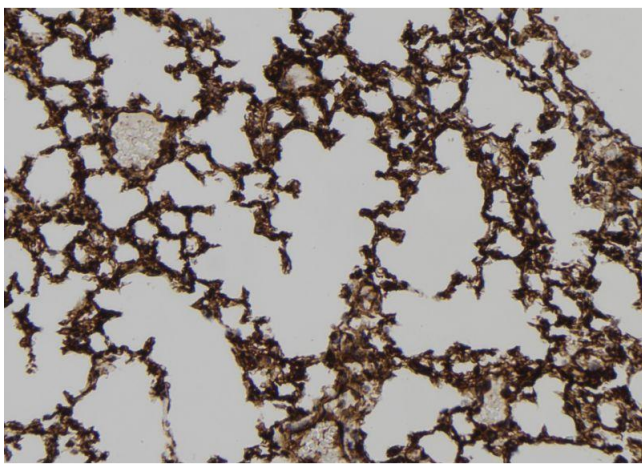
Handling

Format:	Liquid
Concentration:	1 mg/mL
Buffer:	Rabbit IgG in phosphate buffered saline , pH 7.4, 150 mM NaCl, 0.02 % sodium azide and 50 % glycerol.
Preservative:	Sodium azide
Precaution of Use:	This product contains Sodium azide: a POISONOUS AND HAZARDOUS SUBSTANCE which should be handled by trained staff only.
Storage:	-20 °C
Storage Comment:	Store at -20 °C. Stable for 12 months from date of receipt.
Expiry Date:	12 months



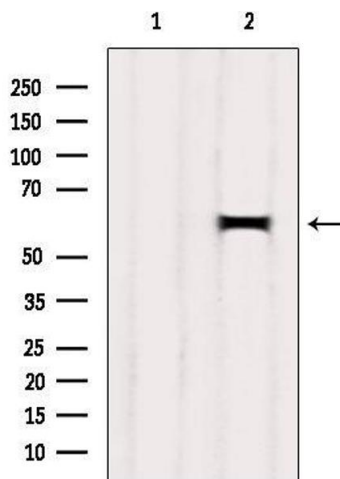
Western Blotting

Image 1. Western blot analysis of extracts of mouse brain tissue, using HEPACAM antibody.



Immunohistochemistry

Image 2. ABIN6272919 at 1/100 staining Mouse lung tissue by IHC-P. The sample was formaldehyde fixed and a heat mediated antigen retrieval step in citrate buffer was performed. The sample was then blocked and incubated with the antibody for 1.5 hours at 22°C. An HRP conjugated goat anti-rabbit antibody was used as the secondary.



Western Blotting

Image 3. Western blot analysis of extracts from Mouse brain, using HEPACAM Antibody. The lane on the left was treated with blocking peptide.