

Datasheet for ABIN6262231  
**anti-HGFA antibody (C-Term)**[Go to Product page](#)

## 4 Images

## Overview

Quantity:	100 µL
Target:	HGFA
Binding Specificity:	C-Term
Reactivity:	Mouse, Rat, Human
Host:	Rabbit
Clonality:	Polyclonal
Conjugate:	This HGFA antibody is un-conjugated
Application:	Western Blotting (WB), Immunohistochemistry (IHC), ELISA, Immunocytochemistry (ICC), Immunofluorescence (IF)

## Product Details

Immunogen:	A synthesized peptide derived from human HGFAC, corresponding to a region within C-terminal amino acids.
Isotype:	IgG
Specificity:	HGFAC Antibody detects endogenous levels of total HGFAC.
Predicted Reactivity:	Pig,Bovine,Horse,Dog
Purification:	The antiserum was purified by peptide affinity chromatography using SulfoLink™ Coupling Resin (Thermo Fisher Scientific).

## Target Details

Target:	HGFA
---------	------

## Target Details

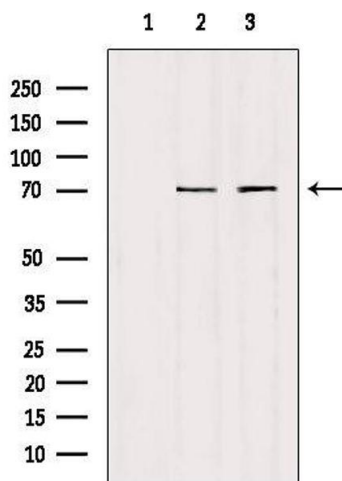
Alternative Name:	HGFAC ( <a href="#">HGFA Products</a> )
Background:	Description: Activates hepatocyte growth factor (HGF) by converting it from a single chain to a heterodimeric form. Gene: HGFAC
Molecular Weight:	71 kDa
Gene ID:	3083
UniProt:	<a href="#">Q04756</a>

## Application Details

Application Notes:	WB 1:1000-3000, IHC 1:200, IF/ICC 1:100-1:500, ELISA(peptide) 1:20000-1:40000
Restrictions:	For Research Use only

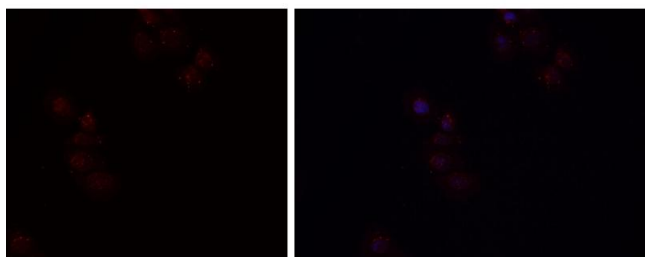
## Handling

Format:	Liquid
Concentration:	1 mg/mL
Buffer:	Rabbit IgG in phosphate buffered saline , pH 7.4, 150 mM NaCl, 0.02 % sodium azide and 50 % glycerol.
Preservative:	Sodium azide
Precaution of Use:	This product contains Sodium azide: a POISONOUS AND HAZARDOUS SUBSTANCE which should be handled by trained staff only.
Storage:	-20 °C
Storage Comment:	Store at -20 °C. Stable for 12 months from date of receipt.
Expiry Date:	12 months



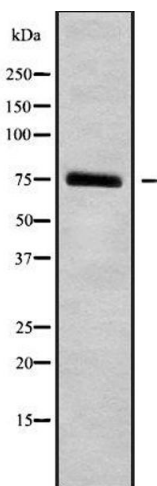
#### Western Blotting

**Image 1.** Western blot analysis of extracts from various samples, using HGFAC Antibody. Lane 1: hybridoma cells treated with blocking peptide. Lane 2: hybridoma cells; Lane 3: 293;



#### Immunofluorescence (fixed cells)

**Image 2.** ABIN6279482 staining HEPG2 cells by IF/ICC. The sample were fixed with PFA and permeabilized in 0.1% Triton X-100, then blocked in 10% serum for 45 minutes at 25°C. The primary antibody was diluted at 1/200 and incubated with the sample for 1 hour at 37°C. An Alexa Fluor 594 conjugated goat anti-rabbit IgG (H+L) antibody (Cat.# S0006), diluted at 1/600 was used as secondary antibody



#### Western Blotting

**Image 3.** Western blot analysis of HGFAC using NIH-3T3 whole cell lysates

Please check the [product details page](#) for more images. Overall 4 images are available for ABIN6262231.