

Datasheet for ABIN6262247
anti-H1FOO antibody (Internal Region)[Go to Product page](#)

3 Images

Overview

Quantity:	100 µL
Target:	H1FOO
Binding Specificity:	Internal Region
Reactivity:	Human, Rat
Host:	Rabbit
Clonality:	Polyclonal
Conjugate:	This H1FOO antibody is un-conjugated
Application:	Western Blotting (WB), ELISA, Immunofluorescence (IF), Immunocytochemistry (ICC)

Product Details

Immunogen:	A synthesized peptide derived from human Histone H1, corresponding to a region within the internal amino acids.
Isotype:	IgG
Specificity:	Histone H1 Antibody detects endogenous levels of total Histone H1.
Predicted Reactivity:	Bovine, Sheep
Purification:	The antiserum was purified by peptide affinity chromatography using SulfoLink™ Coupling Resin (Thermo Fisher Scientific).

Target Details

Target:	H1FOO
---------	-------

Target Details

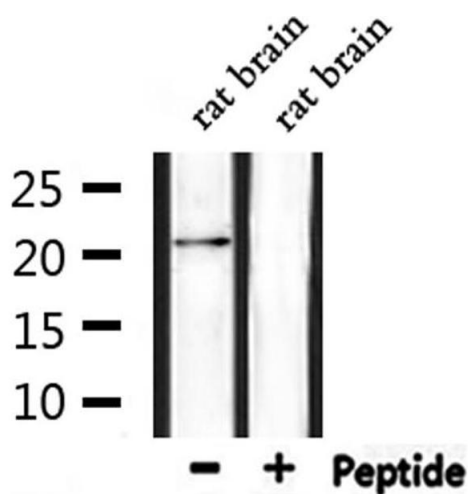
Alternative Name:	H1FOO (H1FOO Products)
Background:	<p>Description: May play a key role in the control of gene expression during oogenesis and early embryogenesis, presumably through the perturbation of chromatin structure. Essential for meiotic maturation of germinal vesicle-stage oocytes. The somatic type linker histone H1c is rapidly replaced by H1oo in a donor nucleus transplanted into an oocyte. The greater mobility of H1oo as compared to H1c may contribute to this rapid replacement and increased instability of the embryonic chromatin structure. The rapid replacement of H1c with H1oo may play an important role in nuclear remodeling (By similarity).</p> <p>Gene: H1FOO</p>
Molecular Weight:	21kDa
Gene ID:	132243
UniProt:	Q8IZA3

Application Details

Application Notes:	WB 1:500-1:2000, IF/ICC 1:100-1:500, ELISA(peptide) 1:20000-1:40000
Restrictions:	For Research Use only

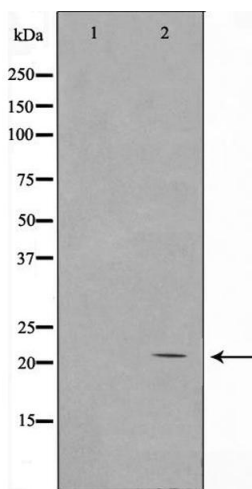
Handling

Format:	Liquid
Concentration:	1 mg/mL
Buffer:	Rabbit IgG in phosphate buffered saline , pH 7.4, 150 mM NaCl, 0.02 % sodium azide and 50 % glycerol.
Preservative:	Sodium azide
Precaution of Use:	This product contains Sodium azide: a POISONOUS AND HAZARDOUS SUBSTANCE which should be handled by trained staff only.
Storage:	-20 °C
Storage Comment:	Store at -20 °C. Stable for 12 months from date of receipt.
Expiry Date:	12 months



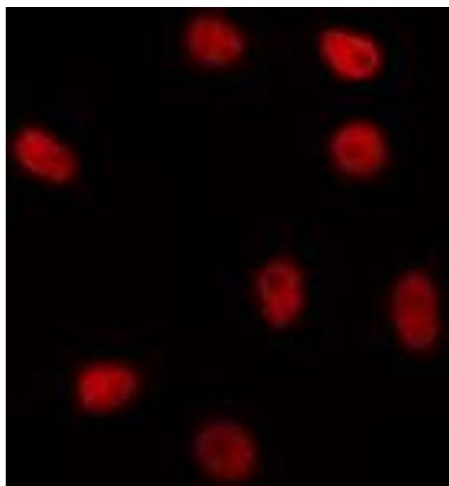
Western Blotting

Image 1. Western blot analysis of extracts from rat brain, using Histone H1 Antibody.



Western Blotting

Image 2. Western blot analysis on COS7 cell lysate using Histone H1 Antibody, *The lane on the left is treated with the antigen-specific peptide.*



Immunofluorescence (fixed cells)

Image 3. ABIN6267046 staining HepG2 by IF/ICC. The sample were fixed with PFA and permeabilized in 0.1% Triton X-100, then blocked in 10% serum for 45 minutes at 25°C. The primary antibody was diluted at 1/200 and incubated with the sample for 1 hour at 37°C. An Alexa Fluor 594 conjugated goat anti-rabbit IgG (H+L) Ab, diluted at 1/600, was used as the secondary antibody.