

Datasheet for ABIN6262285  
**anti-HLA-DMA antibody**

## 2 Images

[Go to Product page](#)

## Overview

Quantity:	100 µL
Target:	HLA-DMA
Reactivity:	Human, Rat
Host:	Rabbit
Clonality:	Polyclonal
Conjugate:	This HLA-DMA antibody is un-conjugated
Application:	Western Blotting (WB), ELISA, Immunohistochemistry (IHC)

## Product Details

Immunogen:	A synthesized peptide derived from human HLA-DMA
Isotype:	IgG
Specificity:	HLA-DMA Antibody detects endogenous levels of total HLA-DMA
Cross-Reactivity:	Human, Rat (Rattus)
Purification:	The antiserum was purified by peptide affinity chromatography using SulfoLink™ Coupling Resin (Thermo Fisher Scientific).

## Target Details

Target:	HLA-DMA
Alternative Name:	HLA-DMA ( <a href="#">HLA-DMA Products</a> )
Background:	Description: Plays a critical role in catalyzing the release of class II-associated invariant chain

## Target Details

peptide (CLIP) from newly synthesized MHC class II molecules and freeing the peptide binding site for acquisition of antigenic peptides. In B-cells, the interaction between HLA-DM and MHC class II molecules is regulated by HLA-DO.  
Gene: HLA-DMA

Molecular Weight: 29 kDa

UniProt: [P28067](#)

Pathways: [Cancer Immune Checkpoints](#), [Human Leukocyte Antigen \(HLA\) in Adaptive Immune Response](#)

## Application Details

Application Notes: WB 1:1000-3000 IHC 1:200

Restrictions: For Research Use only

## Handling

Format: Liquid

Concentration: 1 mg/mL

Buffer: Rabbit IgG in phosphate buffered saline , pH 7.4, 150 mM NaCl, 0.02 % sodium azide and 50 % glycerol.

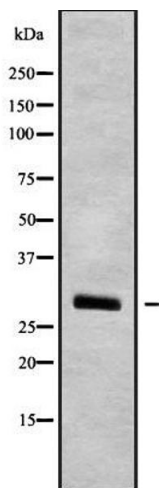
Preservative: Sodium azide

Precaution of Use: This product contains Sodium azide: a POISONOUS AND HAZARDOUS SUBSTANCE which should be handled by trained staff only.

Storage: -20 °C

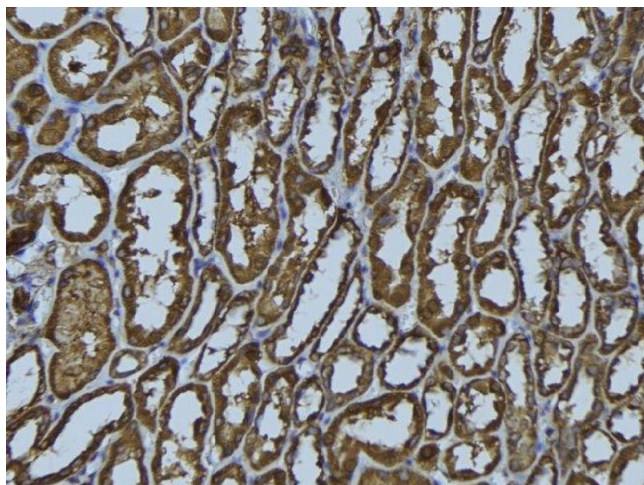
Storage Comment: Store at -20 °C.Stable for 12 months from date of receipt

Expiry Date: 12 months



#### Western Blotting

**Image 1.** Western blot analysis of HLA-DMA using K562 whole cell lysates



#### Immunohistochemistry

**Image 2.** ABIN6279484 at 1/100 staining Rat kidney tissue by IHC-P. The sample was formaldehyde fixed and a heat mediated antigen retrieval step in citrate buffer was performed. The sample was then blocked and incubated with the antibody for 1.5 hours at 22°C. An HRP conjugated goat anti-rabbit antibody was used as the secondary