

Datasheet for ABIN6262295

anti-HLA-E antibody**2** Images[Go to Product page](#)

Overview

Quantity:	100 µL
Target:	HLA-E
Reactivity:	Human, Mouse, Rat
Host:	Rabbit
Clonality:	Polyclonal
Conjugate:	This HLA-E antibody is un-conjugated
Application:	Western Blotting (WB), Immunohistochemistry (IHC)

Product Details

Immunogen:	A synthesized peptide derived from human HLA-E.
Isotype:	IgG
Specificity:	HLAE antibody detects endogenous levels of HLA-E.
Cross-Reactivity:	Human, Mouse (Murine), Rat (Rattus)
Purification:	The antiserum was purified by peptide affinity chromatography using SulfoLink™ Coupling Resin (Thermo Fisher Scientific).

Target Details

Target:	HLA-E
Alternative Name:	HLAE (HLA-E Products)
Background:	Description: Preferably binds to a peptide derived from the signal sequence of most HLA-A, -B, -

Target Details

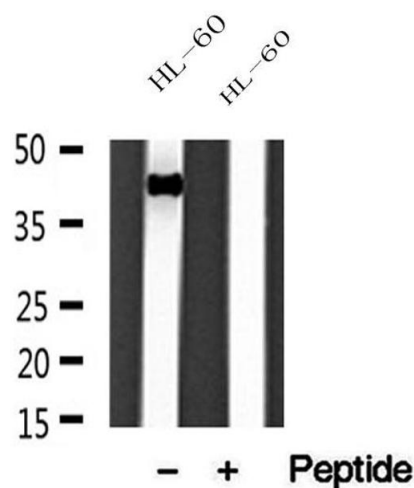
	C and -G molecules. Gene: HLA-E
Molecular Weight:	42 kDa
Gene ID:	3133
UniProt:	P13747
Pathways:	Regulation of Leukocyte Mediated Immunity , Positive Regulation of Immune Effector Process , Human Leukocyte Antigen (HLA) in Adaptive Immune Response

Application Details

Application Notes:	WB 1:500-1:2000, IHC 1:50-1:200
Restrictions:	For Research Use only

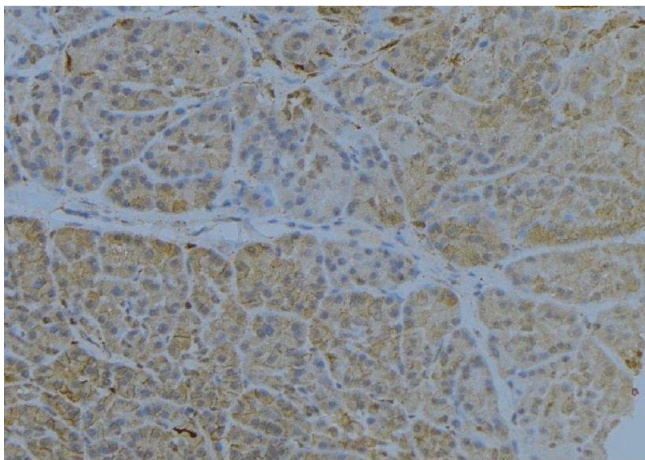
Handling

Format:	Liquid
Concentration:	1 mg/mL
Buffer:	Rabbit IgG in phosphate buffered saline , pH 7.4, 150 mM NaCl, 0.02 % sodium azide and 50 % glycerol.
Preservative:	Sodium azide
Precaution of Use:	This product contains Sodium azide: a POISONOUS AND HAZARDOUS SUBSTANCE which should be handled by trained staff only.
Storage:	-20 °C
Storage Comment:	Store at -20 °C.Stable for 12 months from date of receipt
Expiry Date:	12 months



Western Blotting

Image 1. Western blot analysis of extracts of HL-60 cells, using HLA-E antibody.



Immunohistochemistry

Image 2. ABIN6272846 at 1/100 staining Human pancreas tissue by IHC-P. The sample was formaldehyde fixed and a heat mediated antigen retrieval step in citrate buffer was performed. The sample was then blocked and incubated with the antibody for 1.5 hours at 22°C. An HRP conjugated goat anti-rabbit antibody was used as the secondary