



Datasheet for ABIN6262430  
**anti-IGFBP6 antibody (Internal Region)**



[Go to Product page](#)

1 Image

Overview

Quantity:	100 µL
Target:	IGFBP6
Binding Specificity:	Internal Region
Reactivity:	Human
Host:	Rabbit
Clonality:	Polyclonal
Conjugate:	This IGFBP6 antibody is un-conjugated
Application:	Western Blotting (WB), ELISA, Immunocytochemistry (ICC), Immunofluorescence (IF)

Product Details

Immunogen:	A synthesized peptide derived from human IGFBP6, corresponding to a region within the internal amino acids.
Isotype:	IgG
Specificity:	IGFBP6 Antibody detects endogenous levels of total IGFBP6.
Predicted Reactivity:	Pig,Bovine,Horse,Sheep,Rabbit,Dog
Purification:	The antiserum was purified by peptide affinity chromatography using SulfoLink™ Coupling Resin (Thermo Fisher Scientific).

Target Details

Target:	IGFBP6
---------	--------

## Target Details

---

Alternative Name:	IGFBP6 ( <a href="#">IGFBP6 Products</a> )
Background:	Description: IGF-binding proteins prolong the half-life of the IGFs and have been shown to either inhibit or stimulate the growth promoting effects of the IGFs on cell culture. They alter the interaction of IGFs with their cell surface receptors. Gene: IGFBP6
Molecular Weight:	25 kDa
Gene ID:	3489
UniProt:	<a href="#">P24592</a>
Pathways:	<a href="#">WNT Signaling, Myometrial Relaxation and Contraction</a>

## Application Details

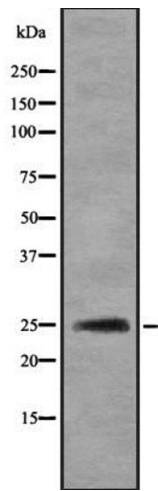
---

Application Notes:	WB 1:1000-3000, IF/ICC 1:100-1:500, ELISA(peptide) 1:20000-1:40000
Restrictions:	For Research Use only

## Handling

---

Format:	Liquid
Concentration:	1 mg/mL
Buffer:	Rabbit IgG in phosphate buffered saline , pH 7.4, 150 mM NaCl, 0.02 % sodium azide and 50 % glycerol.
Preservative:	Sodium azide
Precaution of Use:	This product contains Sodium azide: a POISONOUS AND HAZARDOUS SUBSTANCE which should be handled by trained staff only.
Storage:	-20 °C
Storage Comment:	Store at -20 °C. Stable for 12 months from date of receipt.
Expiry Date:	12 months



### Western Blotting

**Image 1.** Western blot analysis IBP6 using Jurkat whole cell lysates