

Datasheet for ABIN6262467

anti-IFNA5 antibody

2 Images

[Go to Product page](#)

Overview

Quantity:	100 µL
Target:	IFNA5
Reactivity:	Human, Rat, Mouse
Host:	Rabbit
Clonality:	Polyclonal
Conjugate:	This IFNA5 antibody is un-conjugated
Application:	Western Blotting (WB), ELISA, Immunohistochemistry (IHC)

Product Details

Immunogen:	A synthesized peptide derived from human IFNA5
Isotype:	IgG
Specificity:	IFNA5 Antibody detects endogenous levels of total IFNA5
Cross-Reactivity:	Human, Mouse (Murine), Rat (Rattus)
Purification:	The antiserum was purified by peptide affinity chromatography using SulfoLink™ Coupling Resin (Thermo Fisher Scientific).

Target Details

Target:	IFNA5
Alternative Name:	IFNA5 (IFNA5 Products)
Background:	Description: Produced by macrophages, IFN-alpha have antiviral activities. Interferon stimulates

Target Details

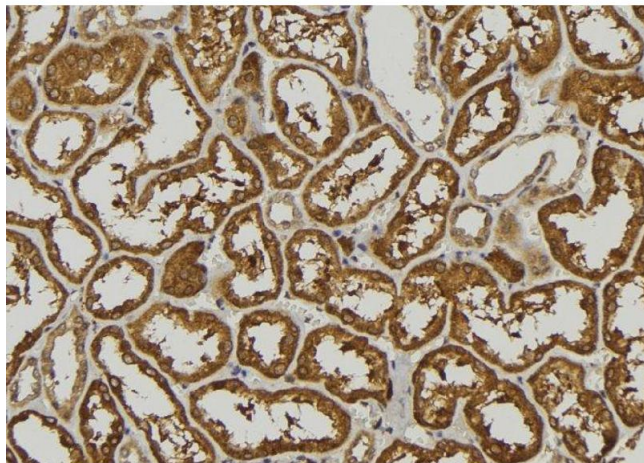
	the production of two enzymes: a protein kinase and an oligoadenylate synthetase. Gene: IFNA5
Molecular Weight:	22 kDa
Gene ID:	3442
UniProt:	P01569
Pathways:	JAK-STAT Signaling , Hepatitis C

Application Details

Application Notes:	WB 1:1000-3000 IHC 1:200
Restrictions:	For Research Use only

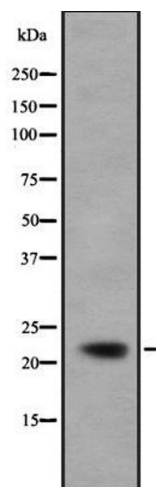
Handling

Format:	Liquid
Concentration:	1 mg/mL
Buffer:	Rabbit IgG in phosphate buffered saline , pH 7.4, 150 mM NaCl, 0.02 % sodium azide and 50 % glycerol.
Preservative:	Sodium azide
Precaution of Use:	This product contains Sodium azide: a POISONOUS AND HAZARDOUS SUBSTANCE which should be handled by trained staff only.
Storage:	-20 °C
Storage Comment:	Store at -20 °C.Stable for 12 months from date of receipt
Expiry Date:	12 months



Immunohistochemistry

Image 1. ABIN6278884 at 1/100 staining Mouse kidney tissue by IHC-P. The sample was formaldehyde fixed and a heat mediated antigen retrieval step in citrate buffer was performed. The sample was then blocked and incubated with the antibody for 1.5 hours at 22°C. An HRP conjugated goat anti-rabbit antibody was used as the secondary



Western Blotting

Image 2. Western blot analysis IFNA5 using COS7 whole cell lysates