

Datasheet for ABIN6262478

anti-IFT20 antibody

4 Images

[Go to Product page](#)

Overview

Quantity:	100 µL
Target:	IFT20
Reactivity:	Human, Mouse, Dog
Host:	Rabbit
Clonality:	Polyclonal
Conjugate:	This IFT20 antibody is un-conjugated
Application:	Western Blotting (WB), Immunohistochemistry (IHC)

Product Details

Immunogen:	A synthesized peptide derived from human IFT20.
Isotype:	IgG
Specificity:	IFT20 antibody detects endogenous levels of IFT20.
Cross-Reactivity:	Dog (Canine), Human, Mouse (Murine)
Purification:	The antiserum was purified by peptide affinity chromatography using SulfoLink™ Coupling Resin (Thermo Fisher Scientific).

Target Details

Target:	IFT20
Alternative Name:	IFT20 (IFT20 Products)
Background:	Description: Part of intraflagellar transport (IFT) particles involved in ciliary process assembly.

Target Details

May play a role in the trafficking of ciliary membrane proteins from the Golgi complex to the cilium. Also involved in autophagy since it is required for trafficking of ATG16L and the expansion of the autophagic compartment.

Gene: IFT20

Molecular Weight: 15-18 kDa

Gene ID: 90410

UniProt: [Q8IY31](#)

Pathways: [Hedgehog Signaling](#)

Application Details

Application Notes: WB 1:500-1:2000, IHC 1:50-1:200

Restrictions: For Research Use only

Handling

Format: Liquid

Concentration: 1 mg/mL

Buffer: Rabbit IgG in phosphate buffered saline , pH 7.4, 150 mM NaCl, 0.02 % sodium azide and 50 % glycerol.

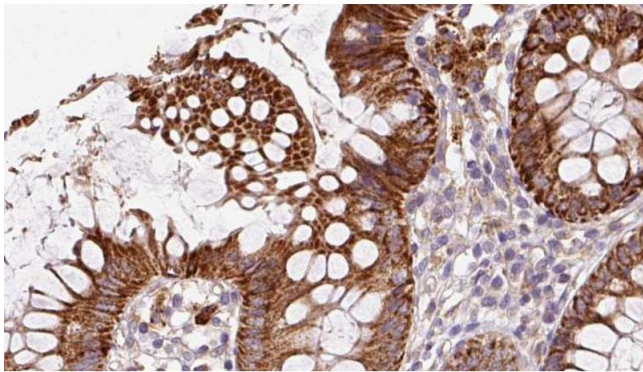
Preservative: Sodium azide

Precaution of Use: This product contains Sodium azide: a POISONOUS AND HAZARDOUS SUBSTANCE which should be handled by trained staff only.

Storage: -20 °C

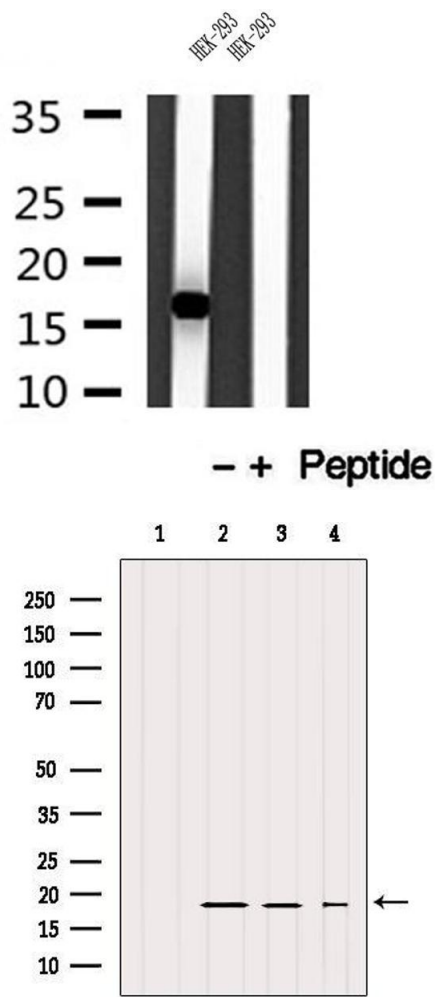
Storage Comment: Store at -20 °C.Stable for 12 months from date of receipt

Expiry Date: 12 months



Immunohistochemistry

Image 1. ABIN6272858 at 1/100 staining Mouse colon tissue by IHC-P. The sample was formaldehyde fixed and a heat mediated antigen retrieval step in citrate buffer was performed. The sample was then blocked and incubated with the antibody for 1.5 hours at 22°C. An HRP conjugated goat anti-rabbit antibody was used as the secondary.



Western Blotting

Image 2. Western blot analysis of extracts of HEK-293 cells, using IFT20 antibody.

Western Blotting

Image 3. Western blot analysis of extracts from various samples, using IFT20 Antibody. Lane 1: Mouse lung treated with blocking peptide; Lane 2: Mouse lung; Lane 3: B16F10; Lane 4: VERO.

Please check the [product details page](#) for more images. Overall 4 images are available for ABIN6262478.