

Datasheet for ABIN6262479  
**anti-HSPB11 antibody (N-Term)**

## 3 Images

[Go to Product page](#)

## Overview

Quantity:	100 µL
Target:	HSPB11
Binding Specificity:	N-Term
Reactivity:	Human, Mouse, Rat
Host:	Rabbit
Clonality:	Polyclonal
Conjugate:	This HSPB11 antibody is un-conjugated
Application:	Western Blotting (WB), Immunofluorescence (IF), Immunohistochemistry (IHC), Immunocytochemistry (ICC)

## Product Details

Immunogen:	A synthesized peptide derived from human IFT25, corresponding to a region within N-terminal amino acids.
Isotype:	IgG
Specificity:	IFT25 Antibody detects endogenous levels of total IFT25.
Predicted Reactivity:	Pig,Bovine,Horse,Sheep,Rabbit,Dog,Xenopus
Purification:	The antiserum was purified by peptide affinity chromatography using SulfoLink™ Coupling Resin (Thermo Fisher Scientific).

## Target Details

Target:	HSPB11
---------	--------

## Target Details

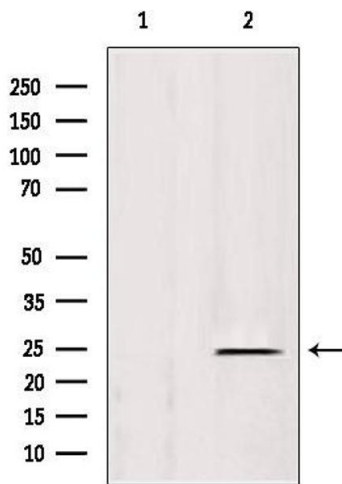
Alternative Name:	HSPB11 ( <a href="#">HSPB11 Products</a> )
Background:	<p>Description: Component of the IFT complex B required for sonic hedgehog/SHH signaling. May mediate transport of SHH components: required for the export of SMO and PTCH1 receptors out of the cilium and the accumulation of GLI2 at the ciliary tip in response to activation of the SHH pathway, suggesting it is involved in the dynamic transport of SHH signaling molecules within the cilium. Not required for ciliary assembly (By similarity).</p> <p>Gene: HSPB11</p>
Molecular Weight:	25 kDa
Gene ID:	51668
UniProt:	<a href="#">Q9Y547</a>

## Application Details

Application Notes:	WB 1:500-1:2000, IHC 1:50-1:200, IF/ICC 1:100-1:500
Restrictions:	For Research Use only

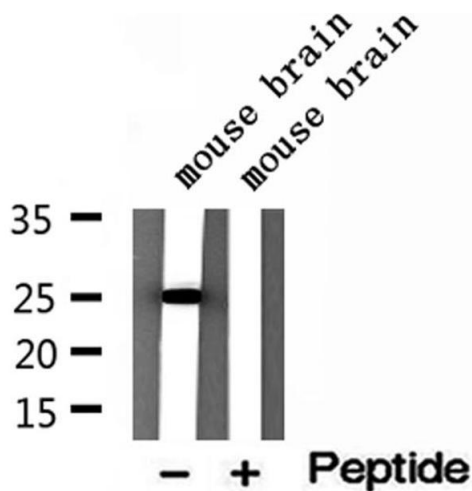
## Handling

Format:	Liquid
Concentration:	1 mg/mL
Buffer:	Rabbit IgG in phosphate buffered saline , pH 7.4, 150 mM NaCl, 0.02 % sodium azide and 50 % glycerol.
Preservative:	Sodium azide
Precaution of Use:	This product contains Sodium azide: a POISONOUS AND HAZARDOUS SUBSTANCE which should be handled by trained staff only.
Storage:	-20 °C
Storage Comment:	Store at -20 °C. Stable for 12 months from date of receipt.
Expiry Date:	12 months



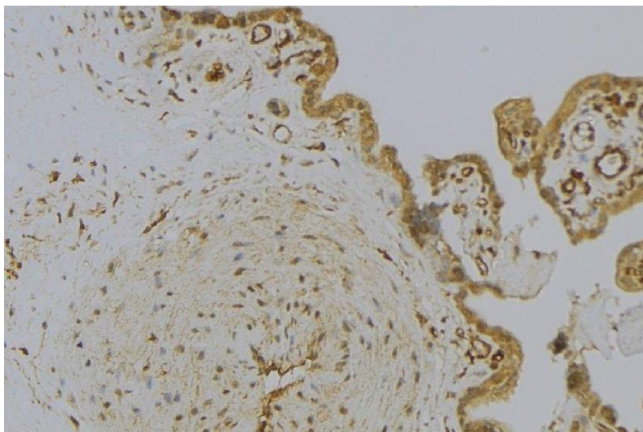
Western Blotting

**Image 1.** Western blot analysis of extracts from rat spleen, using IFT25 antibody. Lane 1 was treated with the blocking peptide.



Western Blotting

**Image 2.** Western blot analysis of extracts of mouse brain tissue, using IFT25 antibody.



Immunohistochemistry

**Image 3.** ABIN6273001 at 1/100 staining Mouse placenta tissue by IHC-P. The sample was formaldehyde fixed and a heat mediated antigen retrieval step in citrate buffer was performed. The sample was then blocked and incubated with the antibody for 1.5 hours at 22°C. An HRP conjugated goat anti-rabbit antibody was used as the secondary