

Datasheet for ABIN6262526

anti-IL2 Receptor beta antibody (Internal Region)**4** Images[Go to Product page](#)

Overview

Quantity:	100 µL
Target:	IL2 Receptor beta (IL2RB)
Binding Specificity:	Internal Region
Reactivity:	Mouse, Human, Rat
Host:	Rabbit
Clonality:	Polyclonal
Conjugate:	This IL2 Receptor beta antibody is un-conjugated
Application:	Western Blotting (WB), ELISA, Immunohistochemistry (IHC), Immunofluorescence (IF), Immunocytochemistry (ICC)

Product Details

Immunogen:	A synthesized peptide derived from human IL-2R beta/CD122, corresponding to a region within the internal amino acids.
Isotype:	IgG
Specificity:	IL-2R beta/CD122 Antibody detects endogenous levels of total IL-2R beta/CD122.
Predicted Reactivity:	Pig,Bovine,Horse,Sheep,Dog,Chicken
Purification:	The antiserum was purified by peptide affinity chromatography using SulfoLink™ Coupling Resin (Thermo Fisher Scientific).

Target Details

Target:	IL2 Receptor beta (IL2RB)
---------	---------------------------

Target Details

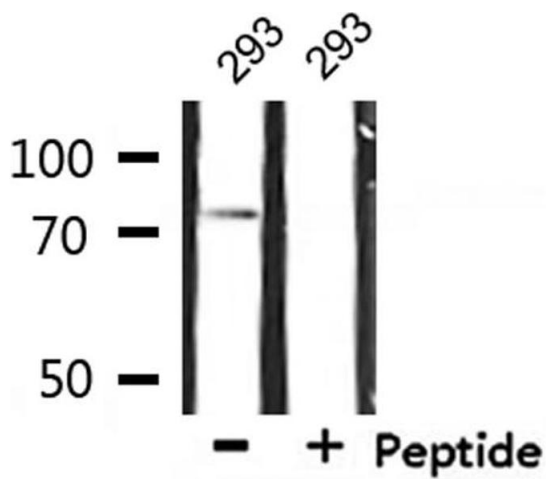
Alternative Name:	IL2RB (IL2RB Products)
Background:	Description: Receptor for interleukin-2. This beta subunit is involved in receptor mediated endocytosis and transduces the mitogenic signals of IL2. Gene: IL2RB
Molecular Weight:	75kDa
Gene ID:	3560
UniProt:	P14784
Pathways:	JAK-STAT Signaling , Growth Factor Binding

Application Details

Application Notes:	WB: 1:500-1:3000, IHC: 1:50-1:200, IF/ICC 1:100-1:500, ELISA(peptide) 1:20000-1:40000
Restrictions:	For Research Use only

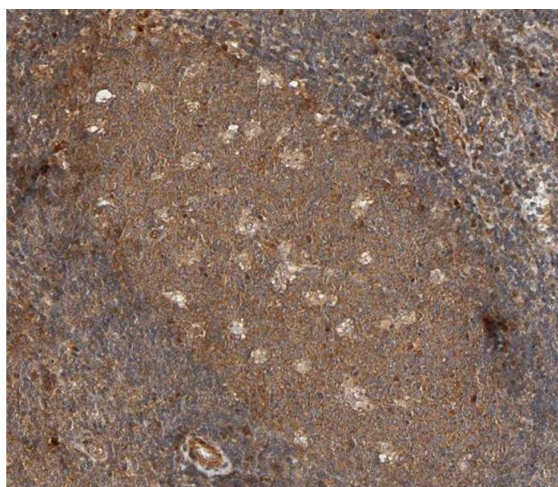
Handling

Format:	Liquid
Concentration:	1 mg/mL
Buffer:	Rabbit IgG in phosphate buffered saline , pH 7.4, 150 mM NaCl, 0.02 % sodium azide and 50 % glycerol.
Preservative:	Sodium azide
Precaution of Use:	This product contains Sodium azide: a POISONOUS AND HAZARDOUS SUBSTANCE which should be handled by trained staff only.
Storage:	-20 °C
Storage Comment:	Store at -20 °C. Stable for 12 months from date of receipt.
Expiry Date:	12 months



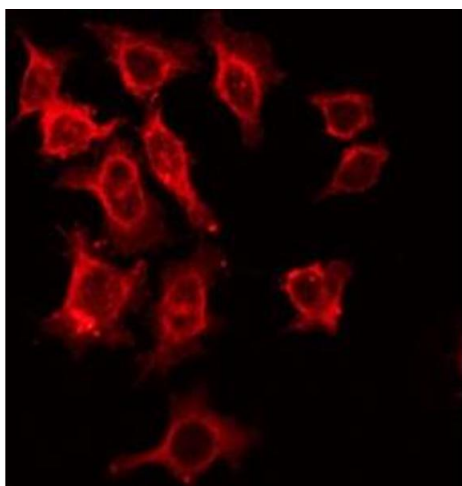
Western Blotting

Image 1. Western blot analysis of extracts from 293, using IL-2Rbeta/CD122 Antibody. The lane on the right is treated with the antigen-specific peptide.



Immunohistochemistry

Image 2. ABIN6266484 at 1/100 staining human Lymphoma tissue sections by IHC-P. The tissue was formaldehyde fixed and a heat mediated antigen retrieval step in citrate buffer was performed. The tissue was then blocked and incubated with the antibody for 1.5 hours at 22°C. An HRP conjugated goat anti-rabbit antibody was used as the secondary.



Immunofluorescence (fixed cells)

Image 3. ABIN6266484 staining HeLa by IF/ICC. The sample were fixed with PFA and permeabilized in 0.1% Triton X-100, then blocked in 10% serum for 45 minutes at 25°C. The primary antibody was diluted at 1/200 and incubated with the sample for 1 hour at 37°C. An Alexa Fluor 594 conjugated goat anti-rabbit IgG (H+L) Ab, diluted at 1/600, was used as the secondary antibody.

Please check the [product details page](#) for more images. Overall 4 images are available for ABIN6262526.