

Datasheet for ABIN6262540
anti-IL17F antibody (Internal Region)[Go to Product page](#)

2 Images

Overview

Quantity:	100 µL
Target:	IL17F
Binding Specificity:	Internal Region
Reactivity:	Human
Host:	Rabbit
Clonality:	Polyclonal
Conjugate:	This IL17F antibody is un-conjugated
Application:	Western Blotting (WB), ELISA, Immunohistochemistry (IHC), Immunofluorescence (IF), Immunocytochemistry (ICC)

Product Details

Immunogen:	A synthesized peptide derived from human IL17F, corresponding to a region within the internal amino acids.
Isotype:	IgG
Specificity:	IL17F Antibody detects endogenous levels of total IL17F.
Predicted Reactivity:	Horse
Purification:	The antiserum was purified by peptide affinity chromatography using SulfoLink™ Coupling Resin (Thermo Fisher Scientific).

Target Details

Target:	IL17F
---------	-------

Target Details

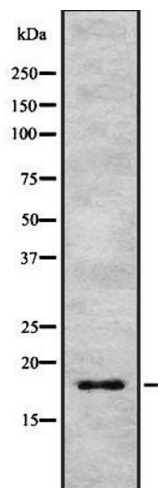
Alternative Name:	IL17F (IL17F Products)
Background:	<p>Description: Ligand for IL17RA and IL17RC (PubMed:17911633). The heterodimer formed by IL17A and IL17F is a ligand for the heterodimeric complex formed by IL17RA and IL17RC (PubMed:18684971). Involved in stimulating the production of other cytokines such as IL6, IL8 and CSF2, and in regulation of cartilage matrix turnover (PubMed:11591732, PubMed:11591768, PubMed:11574464). Also involved in stimulating the proliferation of peripheral blood mononuclear cells and T-cells and in inhibition of angiogenesis (PubMed:11591732). Plays a role in the induction of neutrophilia in the lungs and in the exacerbation of antigen-induced pulmonary allergic inflammation (By similarity).</p> <p>Gene: IL17F</p>
Molecular Weight:	18 kDa
Gene ID:	112744
UniProt:	Q96PD4
Pathways:	Cellular Response to Molecule of Bacterial Origin, Positive Regulation of Endopeptidase Activity

Application Details

Application Notes:	WB 1:1000-3000, IHC 1:200, IF/ICC 1:100-1:500, ELISA(peptide) 1:20000-1:40000
Restrictions:	For Research Use only

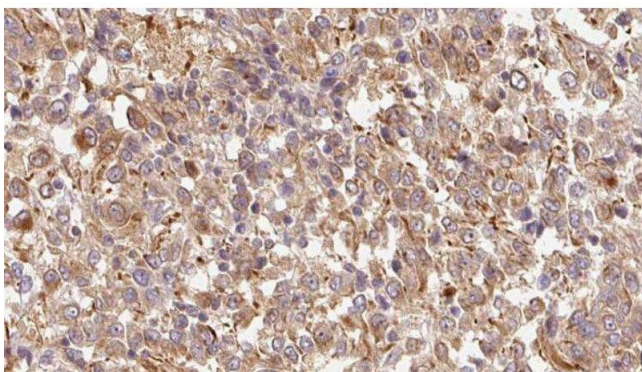
Handling

Format:	Liquid
Concentration:	1 mg/mL
Buffer:	Rabbit IgG in phosphate buffered saline , pH 7.4, 150 mM NaCl, 0.02 % sodium azide and 50 % glycerol.
Preservative:	Sodium azide
Precaution of Use:	This product contains Sodium azide: a POISONOUS AND HAZARDOUS SUBSTANCE which should be handled by trained staff only.
Storage:	-20 °C
Storage Comment:	Store at -20 °C. Stable for 12 months from date of receipt.
Expiry Date:	12 months



Western Blotting

Image 1. Western blot analysis IL17F using HeLa whole cell lysates



Immunohistochemistry

Image 2. ABIN6278895 at 1/100 staining Human Melanoma tissue by IHC-P. The sample was formaldehyde fixed and a heat mediated antigen retrieval step in citrate buffer was performed. The sample was then blocked and incubated with the antibody for 1.5 hours at 22°C. An HRP conjugated goat anti-rabbit antibody was used as the secondary