

Datasheet for ABIN6262544  
**anti-IL1A antibody (N-Term)**

## 3 Images

[Go to Product page](#)

## Overview

Quantity:	100 µL
Target:	IL1A
Binding Specificity:	N-Term
Reactivity:	Human, Mouse, Rat
Host:	Rabbit
Clonality:	Polyclonal
Conjugate:	This IL1A antibody is un-conjugated
Application:	Western Blotting (WB), ELISA, Immunohistochemistry (IHC)

## Product Details

Immunogen:	A synthesized peptide derived from human IL1 alpha, corresponding to a region within N-terminal amino acids.
Isotype:	IgG
Specificity:	IL1 alpha Antibody detects endogenous levels of total IL1 alpha.
Predicted Reactivity:	Pig,Bovine,Horse,Sheep,Rabbit,Dog
Purification:	The antiserum was purified by peptide affinity chromatography using SulfoLink™ Coupling Resin (Thermo Fisher Scientific).

## Target Details

Target:	IL1A
---------	------

## Target Details

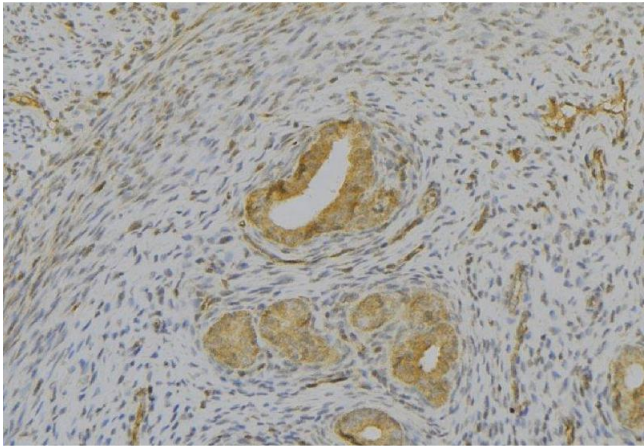
Alternative Name:	IL1A ( <a href="#">IL1A Products</a> )
Background:	<p>Description: Produced by activated macrophages, IL-1 stimulates thymocyte proliferation by inducing IL-2 release, B-cell maturation and proliferation, and fibroblast growth factor activity. IL-1 proteins are involved in the inflammatory response, being identified as endogenous pyrogens, and are reported to stimulate the release of prostaglandin and collagenase from synovial cells.</p> <p>Gene: IL1A</p>
Molecular Weight:	31kDa
Gene ID:	3552
UniProt:	<a href="#">P01583</a>
Pathways:	<a href="#">NF-kappaB Signaling</a> , <a href="#">Autophagy</a> , <a href="#">Cancer Immune Checkpoints</a>

## Application Details

Application Notes:	WB 1:500-1:2000, IHC 1:50-1:200, ELISA(peptide) 1:20000-1:40000
Restrictions:	For Research Use only

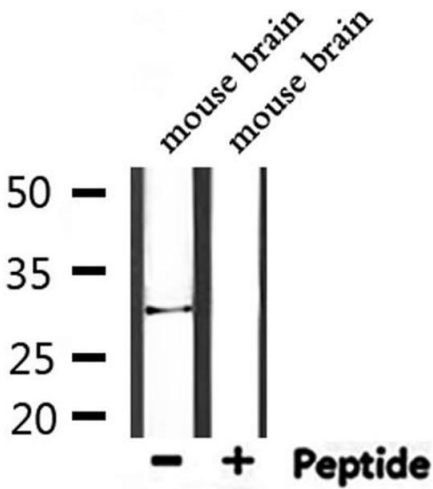
## Handling

Format:	Liquid
Concentration:	1 mg/mL
Buffer:	Rabbit IgG in phosphate buffered saline , pH 7.4, 150 mM NaCl, 0.02 % sodium azide and 50 % glycerol.
Preservative:	Sodium azide
Precaution of Use:	This product contains Sodium azide: a POISONOUS AND HAZARDOUS SUBSTANCE which should be handled by trained staff only.
Storage:	-20 °C
Storage Comment:	Store at -20 °C. Stable for 12 months from date of receipt.
Expiry Date:	12 months



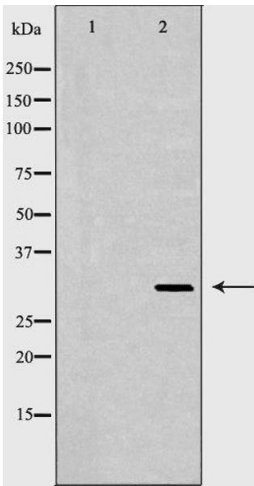
**Immunohistochemistry**

**Image 1.** ABIN6277152 at 1/100 staining Human uterus tissue by IHC-P. The sample was formaldehyde fixed and a heat mediated antigen retrieval step in citrate buffer was performed. The sample was then blocked and incubated with the antibody for 1.5 hours at 22°C. An HRP conjugated goat anti-rabbit antibody was used as the secondary



**Western Blotting**

**Image 2.** Western blot analysis of extracts from mouse brain, using IL1A Antibody.



**Western Blotting**

**Image 3.** Western blot analysis of extracts of skin, using IL1A antibody. The lane on the left is treated with the antigen-specific peptide.