

Datasheet for ABIN6262556

anti-IL-24 antibody (Internal Region)[Go to Product page](#)**2** Images

Overview

| | |
|----------------------|--|
| Quantity: | 100 µL |
| Target: | IL-24 (IL24) |
| Binding Specificity: | Internal Region |
| Reactivity: | Human, Rat, Mouse |
| Host: | Rabbit |
| Clonality: | Polyclonal |
| Conjugate: | This IL-24 antibody is un-conjugated |
| Application: | Western Blotting (WB), ELISA, Immunohistochemistry (IHC) |

Product Details

| | |
|---------------|---|
| Immunogen: | A synthesized peptide derived from human IL24, corresponding to a region within the internal amino acids. |
| Isotype: | IgG |
| Specificity: | IL24 Antibody detects endogenous levels of total IL24. |
| Purification: | The antiserum was purified by peptide affinity chromatography using SulfoLink™ Coupling Resin (Thermo Fisher Scientific). |

Target Details

| | |
|-------------------|--|
| Target: | IL-24 (IL24) |
| Alternative Name: | IL24 (IL24 Products) |

Target Details

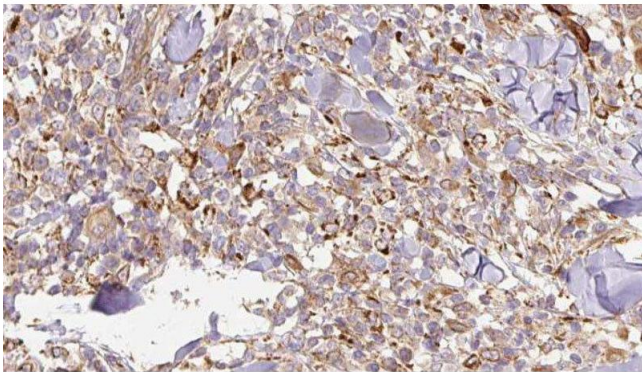
| | |
|-------------------|---|
| Background: | Description: Has antiproliferative properties on melanoma cells and may contribute to terminal cell differentiation. Gene: IL24 |
| Molecular Weight: | 24kDa |
| Gene ID: | 11009 |
| UniProt: | Q13007 |
| Pathways: | Cellular Response to Molecule of Bacterial Origin , Positive Regulation of Endopeptidase Activity , Autophagy |

Application Details

| | |
|--------------------|---|
| Application Notes: | WB 1:500-1:2000, IHC 1:50-1:200, ELISA(peptide) 1:20000-1:40000 |
| Restrictions: | For Research Use only |

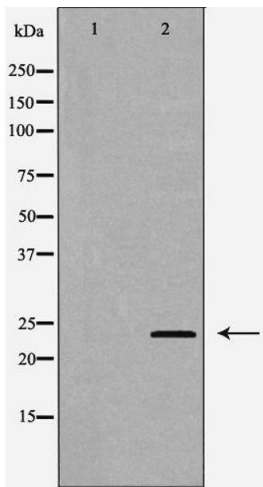
Handling

| | |
|--------------------|--|
| Format: | Liquid |
| Concentration: | 1 mg/mL |
| Buffer: | Rabbit IgG in phosphate buffered saline , pH 7.4, 150 mM NaCl, 0.02 % sodium azide and 50 % glycerol. |
| Preservative: | Sodium azide |
| Precaution of Use: | This product contains Sodium azide: a POISONOUS AND HAZARDOUS SUBSTANCE which should be handled by trained staff only. |
| Storage: | -20 °C |
| Storage Comment: | Store at -20 °C. Stable for 12 months from date of receipt. |
| Expiry Date: | 12 months |



Immunohistochemistry

Image 1. ABIN6276935 at 1/100 staining Human Melanoma tissue by IHC-P. The sample was formaldehyde fixed and a heat mediated antigen retrieval step in citrate buffer was performed. The sample was then blocked and incubated with the antibody for 1.5 hours at 22°C. An HRP conjugated goat anti-rabbit antibody was used as the secondary



Western Blotting

Image 2. Western blot analysis of A431 cell lysate, using IL24 Antibody. The lane on the left is treated with the antigen-specific peptide.