



[Go to Product page](#)

Datasheet for ABIN6262563
anti-IL2RG antibody (N-Term)

2 Images

Overview

Quantity:	100 µL
Target:	IL2RG
Binding Specificity:	N-Term
Reactivity:	Human, Mouse, Rat
Host:	Rabbit
Clonality:	Polyclonal
Conjugate:	This IL2RG antibody is un-conjugated
Application:	Western Blotting (WB), ELISA, Immunohistochemistry (IHC)

Product Details

Immunogen:	A synthesized peptide derived from human IL2RG, corresponding to a region within N-terminal amino acids.
Isotype:	IgG
Specificity:	IL2RG Antibody detects endogenous levels of total IL2RG.
Predicted Reactivity:	Pig,Bovine,Sheep,Dog
Purification:	The antiserum was purified by peptide affinity chromatography using SulfoLink™ Coupling Resin (Thermo Fisher Scientific).

Target Details

Target:	IL2RG
---------	-------

Target Details

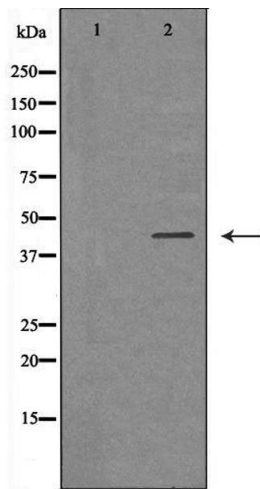
Alternative Name:	IL2RG (IL2RG Products)
Background:	Description: Common subunit for the receptors for a variety of interleukins. Gene: IL2RG
Molecular Weight:	42kDa
Gene ID:	3561
UniProt:	P31785
Pathways:	JAK-STAT Signaling, Growth Factor Binding

Application Details

Application Notes:	WB 1:500-1:2000, IHC 1:50-1:200, ELISA(peptide) 1:20000-1:40000
Restrictions:	For Research Use only

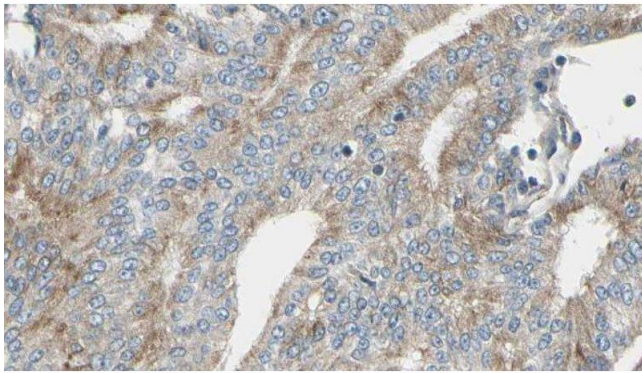
Handling

Format:	Liquid
Concentration:	1 mg/mL
Buffer:	Rabbit IgG in phosphate buffered saline , pH 7.4, 150 mM NaCl, 0.02 % sodium azide and 50 % glycerol.
Preservative:	Sodium azide
Precaution of Use:	This product contains Sodium azide: a POISONOUS AND HAZARDOUS SUBSTANCE which should be handled by trained staff only.
Storage:	-20 °C
Storage Comment:	Store at -20 °C. Stable for 12 months from date of receipt.
Expiry Date:	12 months



Western Blotting

Image 1. Western blot analysis of extracts of Jurkat, using IL2RG antibody. The lane on the left is treated with the antigen-specific peptide.



Immunohistochemistry

Image 2. ABIN6276905 at 1/100 staining Human prostate tissue by IHC-P. The sample was formaldehyde fixed and a heat mediated antigen retrieval step in citrate buffer was performed. The sample was then blocked and incubated with the antibody for 1.5 hours at 22°C. An HRP conjugated goat anti-rabbit antibody was used as the secondary