

Datasheet for ABIN6262564
anti-IL-3 antibody (Internal Region)

2 Images

[Go to Product page](#)

Overview

| | |
|----------------------|--|
| Quantity: | 100 µL |
| Target: | IL-3 |
| Binding Specificity: | Internal Region |
| Reactivity: | Human, Rat |
| Host: | Rabbit |
| Clonality: | Polyclonal |
| Conjugate: | This IL-3 antibody is un-conjugated |
| Application: | Western Blotting (WB), ELISA, Immunohistochemistry (IHC), Immunocytochemistry (ICC), Immunofluorescence (IF) |

Product Details

| | |
|---------------|---|
| Immunogen: | A synthesized peptide derived from human IL3, corresponding to a region within the internal amino acids. |
| Isotype: | IgG |
| Specificity: | IL3 Antibody detects endogenous levels of total IL3. |
| Purification: | The antiserum was purified by peptide affinity chromatography using SulfoLink™ Coupling Resin (Thermo Fisher Scientific). |

Target Details

| | |
|-------------------|---------------------------------------|
| Target: | IL-3 |
| Alternative Name: | IL3 (IL-3 Products) |

Target Details

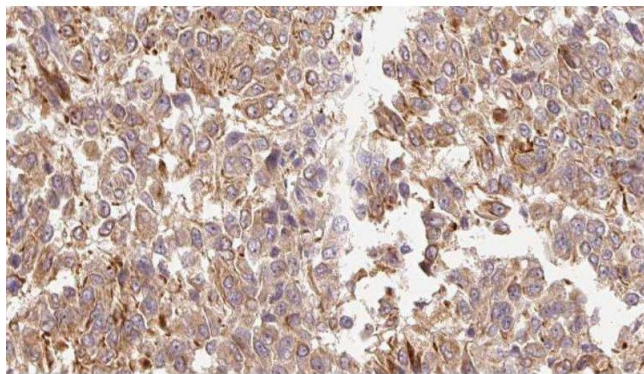
| | |
|-------------------|--|
| Background: | Description: Granulocyte/macrophage colony-stimulating factors are cytokines that act in hematopoiesis by controlling the production, differentiation, and function of 2 related white cell populations of the blood, the granulocytes and the monocytes-macrophages. Gene: IL3 |
| Molecular Weight: | 17 kDa |
| Gene ID: | 3562 |
| UniProt: | P08700 |
| Pathways: | JAK-STAT Signaling , Regulation of Carbohydrate Metabolic Process , Autophagy |

Application Details

| | |
|--------------------|---|
| Application Notes: | WB 1:1000-3000, IHC 1:200, IF/ICC 1:100-1:500, ELISA(peptide) 1:20000-1:40000 |
| Restrictions: | For Research Use only |

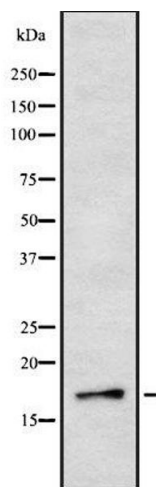
Handling

| | |
|--------------------|--|
| Format: | Liquid |
| Concentration: | 1 mg/mL |
| Buffer: | Rabbit IgG in phosphate buffered saline , pH 7.4, 150 mM NaCl, 0.02 % sodium azide and 50 % glycerol. |
| Preservative: | Sodium azide |
| Precaution of Use: | This product contains Sodium azide: a POISONOUS AND HAZARDOUS SUBSTANCE which should be handled by trained staff only. |
| Storage: | -20 °C |
| Storage Comment: | Store at -20 °C. Stable for 12 months from date of receipt. |
| Expiry Date: | 12 months |



Immunohistochemistry

Image 1. ABIN6278899 at 1/100 staining Human Melanoma tissue by IHC-P. The sample was formaldehyde fixed and a heat mediated antigen retrieval step in citrate buffer was performed. The sample was then blocked and incubated with the antibody for 1.5 hours at 22°C. An HRP conjugated goat anti-rabbit antibody was used as the secondary



Western Blotting

Image 2. Western blot analysis IL3 using Jurkat whole cell lysates