



Datasheet for ABIN6262593  
**anti-INPP4A antibody (Internal Region)**



[Go to Product page](#)

1 Image

### Overview

Quantity:	100 µL
Target:	INPP4A
Binding Specificity:	Internal Region
Reactivity:	Human, Mouse, Rat
Host:	Rabbit
Clonality:	Polyclonal
Conjugate:	This INPP4A antibody is un-conjugated
Application:	Western Blotting (WB), Immunohistochemistry (IHC), ELISA, Immunocytochemistry (ICC), Immunofluorescence (IF)

### Product Details

Immunogen:	A synthesized peptide derived from human INPP4A, corresponding to a region within the internal amino acids.
Isotype:	IgG
Specificity:	INPP4A Antibody detects endogenous levels of total INPP4A.
Predicted Reactivity:	Pig,Bovine,Horse,Sheep,Rabbit,Dog,Chicken,Xenopus
Purification:	The antiserum was purified by peptide affinity chromatography using SulfoLink™ Coupling Resin (Thermo Fisher Scientific).

### Target Details

Target:	INPP4A
---------	--------

## Target Details

---

Alternative Name:	INPP4A ( <a href="#">INPP4A Products</a> )
Background:	Description: Catalyzes the hydrolysis of the 4-position phosphate of phosphatidylinositol 3,4-bisphosphate, inositol 1,3,4-trisphosphate and inositol 3,4-bisphosphate. Gene: INPP4A
Molecular Weight:	110 kDa
Gene ID:	3631
UniProt:	<a href="#">Q96PE3</a>

## Application Details

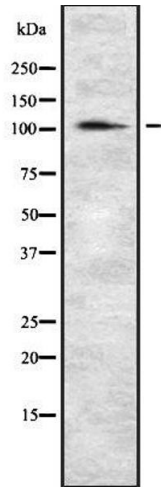
---

Application Notes:	WB 1:1000-3000, IF/ICC 1:100-1:500, IHC 1:50-1:200, ELISA(peptide) 1:20000-1:40000
Restrictions:	For Research Use only

## Handling

---

Format:	Liquid
Concentration:	1 mg/mL
Buffer:	Rabbit IgG in phosphate buffered saline , pH 7.4, 150 mM NaCl, 0.02 % sodium azide and 50 % glycerol.
Preservative:	Sodium azide
Precaution of Use:	This product contains Sodium azide: a POISONOUS AND HAZARDOUS SUBSTANCE which should be handled by trained staff only.
Storage:	-20 °C
Storage Comment:	Store at -20 °C. Stable for 12 months from date of receipt.
Expiry Date:	12 months



### Western Blotting

**Image 1.** Western blot analysis of INPP4A using HeLa whole lysates.