

Datasheet for ABIN6262596
anti-INPP5J antibody (C-Term)[Go to Product page](#)

1 Image

Overview

Quantity:	100 µL
Target:	INPP5J
Binding Specificity:	C-Term
Reactivity:	Human, Rat
Host:	Rabbit
Clonality:	Polyclonal
Conjugate:	This INPP5J antibody is un-conjugated
Application:	Western Blotting (WB), ELISA

Product Details

Immunogen:	A synthesized peptide derived from human INPP5J, corresponding to a region within C-terminal amino acids.
Isotype:	IgG
Specificity:	INPP5J Antibody detects endogenous levels of total INPP5J.
Predicted Reactivity:	Pig,Bovine,Dog
Purification:	The antiserum was purified by peptide affinity chromatography using SulfoLink™ Coupling Resin (Thermo Fisher Scientific).

Target Details

Target:	INPP5J
---------	--------

Target Details

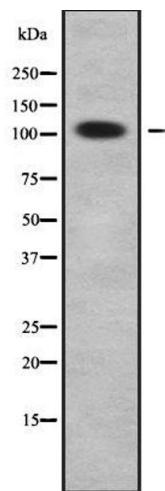
Alternative Name:	INPP5J (INPP5J Products)
Background:	<p>Description: Inositol 5-phosphatase, which converts inositol 1,4,5-trisphosphate to inositol 1,4-bisphosphate. Also converts phosphatidylinositol 4,5-bisphosphate to phosphatidylinositol 4-phosphate and inositol 1,3,4,5-tetrakisphosphate to inositol 1,3,4-trisphosphate in vitro. May be involved in modulation of the function of inositol and phosphatidylinositol polyphosphate-binding proteins that are present at membranes ruffles (By similarity).</p> <p>Gene: INPP5J</p>
Molecular Weight:	107 kDa
Gene ID:	27124
UniProt:	Q15735

Application Details

Application Notes:	WB 1:1000-3000, ELISA(peptide) 1:20000-1:40000
Restrictions:	For Research Use only

Handling

Format:	Liquid
Concentration:	1 mg/mL
Buffer:	Rabbit IgG in phosphate buffered saline , pH 7.4, 150 mM NaCl, 0.02 % sodium azide and 50 % glycerol.
Preservative:	Sodium azide
Precaution of Use:	This product contains Sodium azide: a POISONOUS AND HAZARDOUS SUBSTANCE which should be handled by trained staff only.
Storage:	-20 °C
Storage Comment:	Store at -20 °C. Stable for 12 months from date of receipt.
Expiry Date:	12 months



Western Blotting

Image 1. Western blot analysis INPP5J using K562 whole cell lysates