



[Go to Product page](#)

Datasheet for ABIN6262599

## anti-INSIG1 antibody (Internal Region)

### 3 Images

#### Overview

Quantity:	100 µL
Target:	INSIG1
Binding Specificity:	Internal Region
Reactivity:	Human, Mouse
Host:	Rabbit
Clonality:	Polyclonal
Conjugate:	This INSIG1 antibody is un-conjugated
Application:	Western Blotting (WB), Immunohistochemistry (IHC), Immunofluorescence (IF), Immunocytochemistry (ICC)

#### Product Details

Immunogen:	A synthesized peptide derived from human INSIG1, corresponding to a region within the internal amino acids.
Isotype:	IgG
Specificity:	INSIG1 Antibody detects endogenous levels of total INSIG1.
Predicted Reactivity:	Pig,Zebrafish,Bovine,Horse,Sheep,Rabbit,Dog,Chicken,Xenopus
Purification:	The antiserum was purified by peptide affinity chromatography using SulfoLink™ Coupling Resin (Thermo Fisher Scientific).

#### Target Details

Target:	INSIG1
---------	--------

## Target Details

---

Alternative Name: [INSIG1 \(INSIG1 Products\)](#)

---

Background: Description: Mediates feedback control of cholesterol synthesis by controlling SCAP and HMGCR. Functions by blocking the processing of sterol regulatory element-binding proteins (SREBPs). Capable of retaining the SCAP-SREBF2 complex in the ER thus preventing it from escorting SREBPs to the Golgi. Initiates the sterol-mediated ubiquitin-mediated endoplasmic reticulum-associated degradation (ERAD) of HMGCR via recruitment of the reductase to the ubiquitin ligase, AMFR/gp78. May play a role in growth and differentiation of tissues involved in metabolic control. May play a regulatory role during G0/G1 transition of cell growth.

Gene: INSIG1

---

Molecular Weight: 28-31, 66-70 kDa

---

Gene ID: 3638

---

UniProt: [O15503](#)

---

Pathways: [ER-Nucleus Signaling](#)

---

## Application Details

---

Application Notes: WB 1:500-1:2000, IHC 1:50-1:200, IF/ICC 1:100-1:500

---

Restrictions: For Research Use only

---

## Handling

---

Format: Liquid

---

Concentration: 1 mg/mL

---

Buffer: Rabbit IgG in phosphate buffered saline , pH 7.4, 150 mM NaCl, 0.02 % sodium azide and 50 % glycerol.

---

Preservative: Sodium azide

---

Precaution of Use: This product contains Sodium azide: a POISONOUS AND HAZARDOUS SUBSTANCE which should be handled by trained staff only.

---

Storage: -20 °C

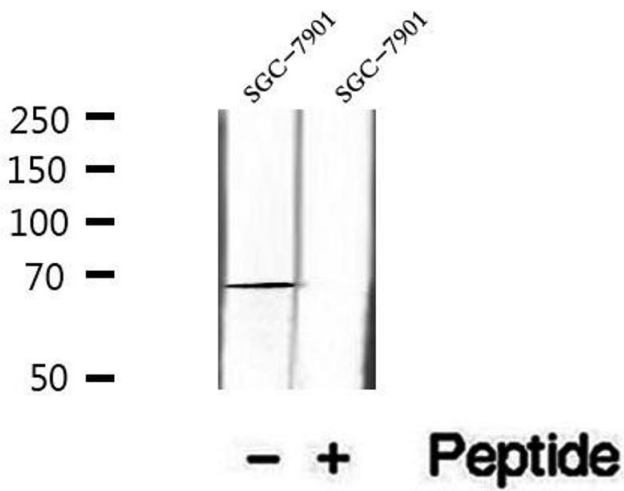
---

Storage Comment: Store at -20 °C. Stable for 12 months from date of receipt.

---

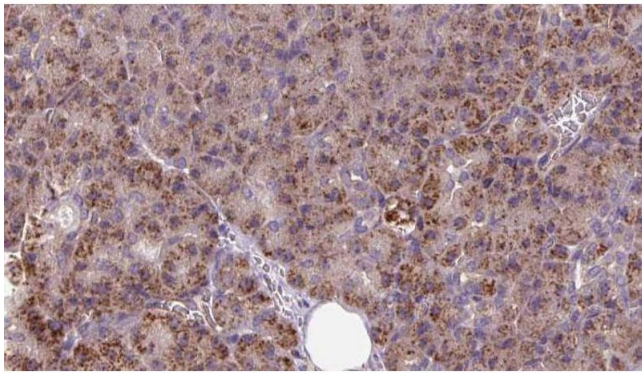
Expiry Date: 12 months

---



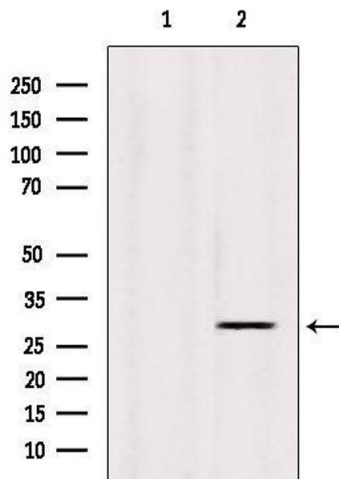
### Western Blotting

**Image 1.** Western blot analysis of extracts of SGC-7901 cells, using INSIG1 antibody.



### Immunohistochemistry

**Image 2.** ABIN6273256 at 1/100 staining Human pancreas cancer tissue by IHC-P. The sample was formaldehyde fixed and a heat mediated antigen retrieval step in citrate buffer was performed. The sample was then blocked and incubated with the antibody for 1.5 hours at 22°C. An HRP conjugated goat anti-rabbit antibody was used as the secondary.



### Western Blotting

**Image 3.** Western blot analysis of extracts from Sp2/0, using INSIG1 Antibody. Lane 1 was treated with the blocking peptide.