

Datasheet for ABIN6262625

**anti-IL2 Receptor beta antibody (N-Term)****2** Images[Go to Product page](#)

## Overview

Quantity:	100 µL
Target:	IL2 Receptor beta (IL2RB)
Binding Specificity:	N-Term
Reactivity:	Mouse, Human
Host:	Rabbit
Clonality:	Polyclonal
Conjugate:	This IL2 Receptor beta antibody is un-conjugated
Application:	Western Blotting (WB), ELISA, Immunohistochemistry (IHC), Immunofluorescence (IF), Immunocytochemistry (ICC)

## Product Details

Immunogen:	A synthesized peptide derived from human IL-2R beta/CD122, corresponding to a region within N-terminal amino acids.
Isotype:	IgG
Specificity:	IL-2R beta/CD122 Antibody detects endogenous levels of total IL-2R beta/CD122.
Predicted Reactivity:	Pig
Purification:	The antiserum was purified by peptide affinity chromatography using SulfoLink™ Coupling Resin (Thermo Fisher Scientific).

## Target Details

Target:	IL2 Receptor beta (IL2RB)
---------	---------------------------

## Target Details

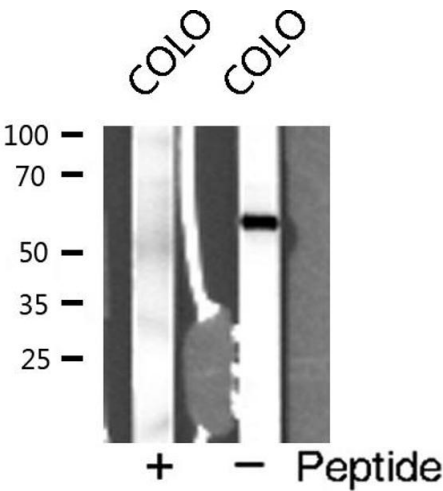
Alternative Name:	IL2RB ( <a href="#">IL2RB Products</a> )
Background:	Description: Receptor for interleukin-2. This beta subunit is involved in receptor mediated endocytosis and transduces the mitogenic signals of IL2. Gene: IL2RB
Molecular Weight:	61 kDa
Gene ID:	3560
UniProt:	<a href="#">P14784</a>
Pathways:	<a href="#">JAK-STAT Signaling</a> , <a href="#">Growth Factor Binding</a>

## Application Details

Application Notes:	WB 1:500-1:2000, IF/ICC 1:100-1:500, IHC 1:50-1:200, ELISA(peptide) 1:20000-1:40000
Restrictions:	For Research Use only

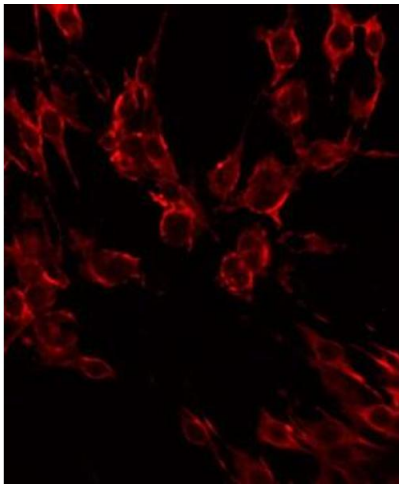
## Handling

Format:	Liquid
Concentration:	1 mg/mL
Buffer:	Rabbit IgG in phosphate buffered saline , pH 7.4, 150 mM NaCl, 0.02 % sodium azide and 50 % glycerol.
Preservative:	Sodium azide
Precaution of Use:	This product contains Sodium azide: a POISONOUS AND HAZARDOUS SUBSTANCE which should be handled by trained staff only.
Storage:	-20 °C
Storage Comment:	Store at -20 °C. Stable for 12 months from date of receipt.
Expiry Date:	12 months



Western Blotting

**Image 1.** Western blot analysis of Interleukin 2 receptor  $\beta$  expression in COLO cells



Immunofluorescence (fixed cells)

**Image 2.** ABIN6268687 staining HeLa by IF/ICC. The sample were fixed with PFA and permeabilized in 0.1% Triton X-100, then blocked in 10% serum for 45 minutes at 25°C. The primary antibody was diluted at 1/200 and incubated with the sample for 1 hour at 37°C. An Alexa Fluor 594 conjugated goat anti-rabbit IgG (H+L) Ab, diluted at 1/600, was used as the secondary antibody.