

Datasheet for ABIN6262631
anti-Involucrin antibody

3 Images

[Go to Product page](#)

Overview

Quantity:	100 µL
Target:	Involucrin (IVL)
Reactivity:	Human, Mouse
Host:	Rabbit
Clonality:	Polyclonal
Conjugate:	This Involucrin antibody is un-conjugated
Application:	Western Blotting (WB), Immunohistochemistry (IHC), Immunofluorescence (IF), ELISA, Immunocytochemistry (ICC)

Product Details

Immunogen:	A synthesized peptide derived from human Involucrin
Isotype:	IgG
Specificity:	Involucrin Antibody detects endogenous levels of total Involucrin.
Purification:	The antiserum was purified by peptide affinity chromatography using SulfoLink™ Coupling Resin (Thermo Fisher Scientific).

Target Details

Target:	Involucrin (IVL)
Alternative Name:	IVL (IVL Products)
Background:	Description: Part of the insoluble cornified cell envelope (CE) of stratified squamous epithelia. Gene: IVL

Target Details

Molecular Weight:	68kDa
Gene ID:	3713
UniProt:	P07476

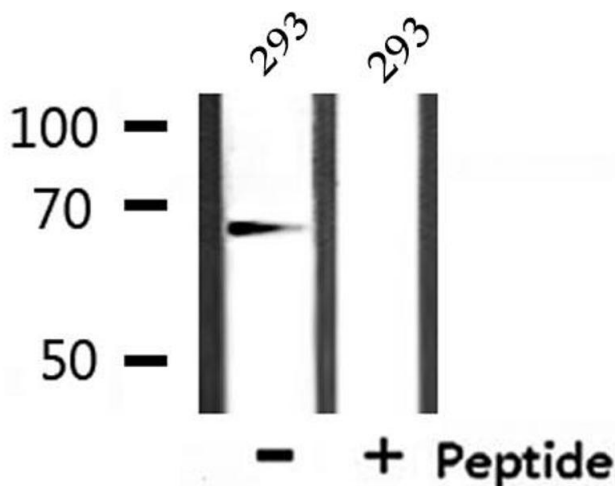
Application Details

Application Notes:	WB: 1:500-1:3000, IHC: 1:50-1:200, IF/ICC 1:100-1:500, ELISA(peptide) 1:20000-1:40000
Restrictions:	For Research Use only

Handling

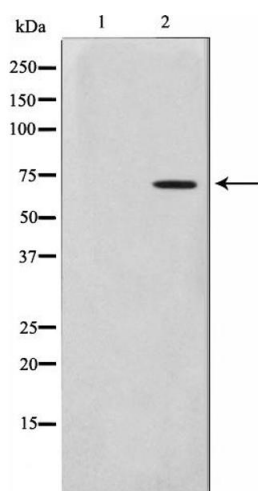
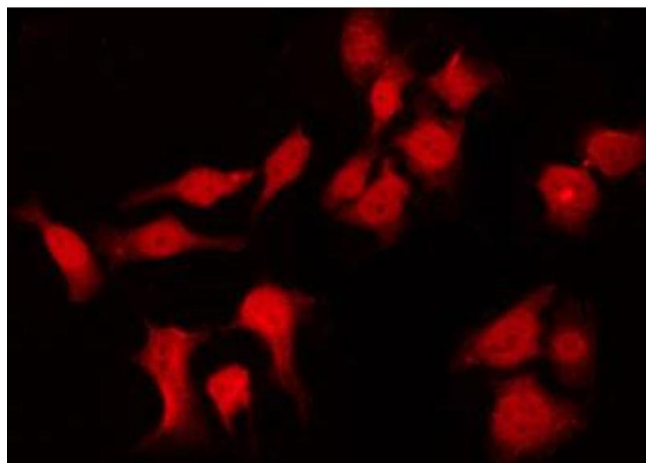
Format:	Liquid
Concentration:	1 mg/mL
Buffer:	Rabbit IgG in phosphate buffered saline , pH 7.4, 150 mM NaCl, 0.02 % sodium azide and 50 % glycerol.
Preservative:	Sodium azide
Precaution of Use:	This product contains Sodium azide: a POISONOUS AND HAZARDOUS SUBSTANCE which should be handled by trained staff only.
Storage:	-20 °C
Storage Comment:	Store at -20 °C. Stable for 12 months from date of receipt.
Expiry Date:	12 months

Images



Western Blotting

Image 1. Western blot analysis of extracts from 293, using Involucrin Antibody.



Immunofluorescence (fixed cells)

Image 2. ABIN6266566 staining HuvEc by IF/ICC. The sample were fixed with PFA and permeabilized in 0.1% Triton X-100, then blocked in 10% serum for 45 minutes at 25°C. The primary antibody was diluted at 1/200 and incubated with the sample for 1 hour at 37°C. An Alexa Fluor 594 conjugated goat anti-rabbit IgG (H+L) Ab, diluted at 1/600, was used as the secondary antibody.

Western Blotting

Image 3. Western blot analysis on HuvEc cell lysate using Involucrin Antibody. The lane on the left is treated with the antigen-specific peptide.