



[Go to Product page](#)

Datasheet for ABIN6262668  
**anti-IRS2 antibody (C-Term)**

2 Images

Overview

Quantity:	100 µL
Target:	IRS2
Binding Specificity:	C-Term
Reactivity:	Human, Mouse, Rat
Host:	Rabbit
Clonality:	Polyclonal
Conjugate:	This IRS2 antibody is un-conjugated
Application:	ELISA, Western Blotting (WB), Immunohistochemistry (IHC)

Product Details

Immunogen:	A synthesized peptide derived from human IRS2, corresponding to a region within C-terminal amino acids.
Isotype:	IgG
Specificity:	IRS2 Antibody detects endogenous levels of total IRS2.
Predicted Reactivity:	Dog
Purification:	The antiserum was purified by peptide affinity chromatography using SulfoLink™ Coupling Resin (Thermo Fisher Scientific).

Target Details

Target:	IRS2
---------	------

## Target Details

---

Alternative Name:	IRS2 ( <a href="#">IRS2 Products</a> )
Background:	Description: May mediate the control of various cellular processes by insulin. Gene: IRS2
Molecular Weight:	185 kDa
Gene ID:	8660
UniProt:	<a href="#">Q9Y4H2</a>
Pathways:	<a href="#">Fc-epsilon Receptor Signaling Pathway</a> , <a href="#">EGFR Signaling Pathway</a> , <a href="#">Neurotrophin Signaling Pathway</a> , <a href="#">Positive Regulation of Peptide Hormone Secretion</a> , <a href="#">Response to Growth Hormone Stimulus</a> , <a href="#">Carbohydrate Homeostasis</a> , <a href="#">Regulation of Carbohydrate Metabolic Process</a>

## Application Details

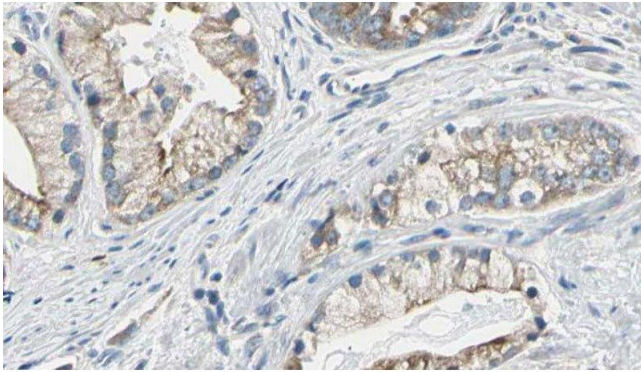
---

Application Notes:	WB 1:1000-3000, IHC 1:200, ELISA(peptide) 1:20000-1:40000
Restrictions:	For Research Use only

## Handling

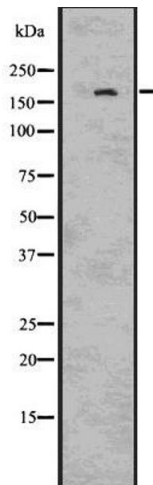
---

Format:	Liquid
Concentration:	1 mg/mL
Buffer:	Rabbit IgG in phosphate buffered saline , pH 7.4, 150 mM NaCl, 0.02 % sodium azide and 50 % glycerol.
Preservative:	Sodium azide
Precaution of Use:	This product contains Sodium azide: a POISONOUS AND HAZARDOUS SUBSTANCE which should be handled by trained staff only.
Storage:	-20 °C
Storage Comment:	Store at -20 °C. Stable for 12 months from date of receipt.
Expiry Date:	12 months



### Immunohistochemistry

**Image 1.** ABIN6277747 at 1/100 staining Human prostate tissue by IHC-P. The sample was formaldehyde fixed and a heat mediated antigen retrieval step in citrate buffer was performed. The sample was then blocked and incubated with the antibody for 1.5 hours at 22°C. An HRP conjugated goat anti-rabbit antibody was used as the secondary



### Western Blotting

**Image 2.** Western blot analysis IRS2 using HUVEC whole cell lysates