



[Go to Product page](#)

Datasheet for ABIN6262721

anti-KRT32 antibody (Internal Region)

2 Images

Overview

Quantity:	100 µL
Target:	KRT32
Binding Specificity:	Internal Region
Reactivity:	Human, Rat
Host:	Rabbit
Clonality:	Polyclonal
Conjugate:	This KRT32 antibody is un-conjugated
Application:	Western Blotting (WB), ELISA, Immunocytochemistry (ICC), Immunofluorescence (IF)

Product Details

Immunogen:	A synthesized peptide derived from human K1H2, corresponding to a region within the internal amino acids.
Isotype:	IgG
Specificity:	K1H2 Antibody detects endogenous levels of total K1H2.
Predicted Reactivity:	Pig,Bovine,Horse,Sheep
Purification:	The antiserum was purified by peptide affinity chromatography using SulfoLink™ Coupling Resin (Thermo Fisher Scientific).

Target Details

Target:	KRT32
---------	-------

Target Details

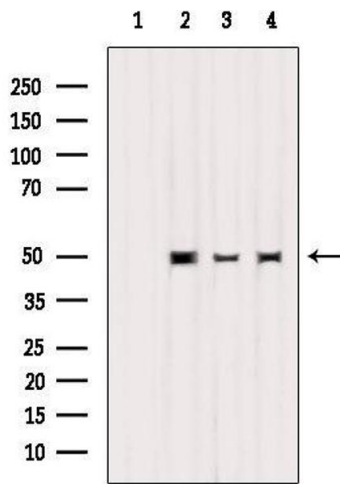
Alternative Name:	KRT32 (KRT32 Products)
Background:	Description: There are two types of hair/microfibrillar keratin, I (acidic) and II (neutral to basic). Gene: KRT32
Molecular Weight:	50 kDa
Gene ID:	3882
UniProt:	Q14532

Application Details

Application Notes:	WB 1:1000-3000, IF/ICC 1:100-1:500, ELISA(peptide) 1:20000-1:40000
Restrictions:	For Research Use only

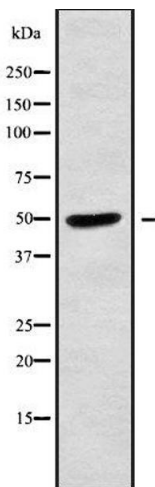
Handling

Format:	Liquid
Concentration:	1 mg/mL
Buffer:	Rabbit IgG in phosphate buffered saline , pH 7.4, 150 mM NaCl, 0.02 % sodium azide and 50 % glycerol.
Preservative:	Sodium azide
Precaution of Use:	This product contains Sodium azide: a POISONOUS AND HAZARDOUS SUBSTANCE which should be handled by trained staff only.
Storage:	-20 °C
Storage Comment:	Store at -20 °C. Stable for 12 months from date of receipt.
Expiry Date:	12 months



Western Blotting

Image 1. Western blot analysis of extracts from various samples, using K1H2 Antibody. Lane 1: 293 treated with blocking peptide. Lane 2: 293; Lane 3: Rat lung, Hela;



Western Blotting

Image 2. Western blot analysis of K1H2 using LOVO whole cell lysates