



Datasheet for ABIN6262726  
**anti-Keratin 2 antibody (N-Term)**



[Go to Product page](#)

1 Image

Overview

Quantity:	100 µL
Target:	Keratin 2 (KRT2)
Binding Specificity:	N-Term
Reactivity:	Human
Host:	Rabbit
Clonality:	Polyclonal
Conjugate:	This Keratin 2 antibody is un-conjugated
Application:	Western Blotting (WB), ELISA

Product Details

Immunogen:	A synthesized peptide derived from human Cytokeratin 2e, corresponding to a region within N-terminal amino acids.
Isotype:	IgG
Specificity:	Cytokeratin 2e Antibody detects endogenous levels of total Cytokeratin 2e.
Predicted Reactivity:	Pig,Rabbit,Dog
Purification:	The antiserum was purified by peptide affinity chromatography using SulfoLink™ Coupling Resin (Thermo Fisher Scientific).

Target Details

Target:	Keratin 2 (KRT2)
---------	------------------

## Target Details

---

Alternative Name:	KRT2 ( <a href="#">KRT2 Products</a> )
Background:	Description: Probably contributes to terminal cornification (PubMed:1380918). Associated with keratinocyte activation, proliferation and keratinization (PubMed:12598329). Plays a role in the establishment of the epidermal barrier on plantar skin (By similarity). Gene: KRT2
Molecular Weight:	65 kDa
Gene ID:	3849
UniProt:	<a href="#">P35908</a>

## Application Details

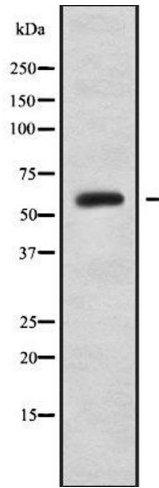
---

Application Notes:	WB 1:1000-3000, ELISA(peptide) 1:20000-1:40000
Restrictions:	For Research Use only

## Handling

---

Format:	Liquid
Concentration:	1 mg/mL
Buffer:	Rabbit IgG in phosphate buffered saline , pH 7.4, 150 mM NaCl, 0.02 % sodium azide and 50 % glycerol.
Preservative:	Sodium azide
Precaution of Use:	This product contains Sodium azide: a POISONOUS AND HAZARDOUS SUBSTANCE which should be handled by trained staff only.
Storage:	-20 °C
Storage Comment:	Store at -20 °C. Stable for 12 months from date of receipt.
Expiry Date:	12 months



### Western Blotting

**Image 1.** Western blot analysis of K22E using MCF7 whole cell lysates