

Datasheet for ABIN6262731
anti-TAF9 antibody (Internal Region)

3 Images

[Go to Product page](#)

Overview

Quantity:	100 µL
Target:	TAF9
Binding Specificity:	Internal Region
Reactivity:	Human, Rat, Mouse
Host:	Rabbit
Clonality:	Polyclonal
Conjugate:	This TAF9 antibody is un-conjugated
Application:	Western Blotting (WB), ELISA, Immunofluorescence (IF), Immunocytochemistry (ICC)

Product Details

Immunogen:	A synthesized peptide derived from human KAD6, corresponding to a region within the internal amino acids.
Isotype:	IgG
Specificity:	KAD6 Antibody detects endogenous levels of total KAD6.
Predicted Reactivity:	Pig,Bovine,Horse,Sheep,Rabbit
Purification:	The antiserum was purified by peptide affinity chromatography using SulfoLink™ Coupling Resin (Thermo Fisher Scientific).

Target Details

Target:	TAF9
---------	------

Target Details

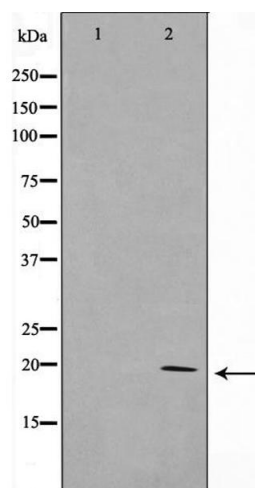
Alternative Name:	AK6 (TAF9 Products)
Background:	<p>Description: Broad-specificity nucleoside monophosphate (NMP) kinase that catalyzes the reversible transfer of the terminal phosphate group between nucleoside triphosphates and monophosphates. AMP and dAMP are the preferred substrates, but CMP and dCMP are also good substrates. IMP is phosphorylated to a much lesser extent. All nucleoside triphosphates ATP, GTP, UTP, CTP, dATP, dCTP, dGTP, and TTP are accepted as phosphate donors. CTP is the best phosphate donor, followed by UTP, ATP, GTP and dCTP. May have a role in nuclear energy homeostasis. Has also ATPase activity. May be involved in regulation of Cajal body (CB) formation.</p> <p>Gene: AK6</p>
Molecular Weight:	20kDa
Gene ID:	102157402
UniProt:	Q9Y3D8
Pathways:	Negative Regulation of intrinsic apoptotic Signaling

Application Details

Application Notes:	WB 1:500-1:2000, IF/ICC 1:100-1:500, ELISA(peptide) 1:20000-1:40000
Restrictions:	For Research Use only

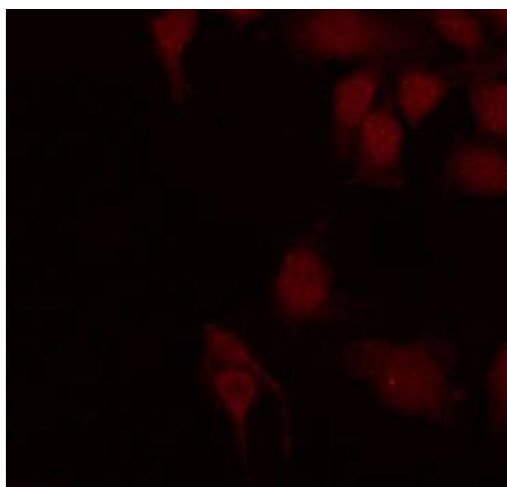
Handling

Format:	Liquid
Concentration:	1 mg/mL
Buffer:	Rabbit IgG in phosphate buffered saline , pH 7.4, 150 mM NaCl, 0.02 % sodium azide and 50 % glycerol.
Preservative:	Sodium azide
Precaution of Use:	This product contains Sodium azide: a POISONOUS AND HAZARDOUS SUBSTANCE which should be handled by trained staff only.
Storage:	-20 °C
Storage Comment:	Store at -20 °C. Stable for 12 months from date of receipt.
Expiry Date:	12 months



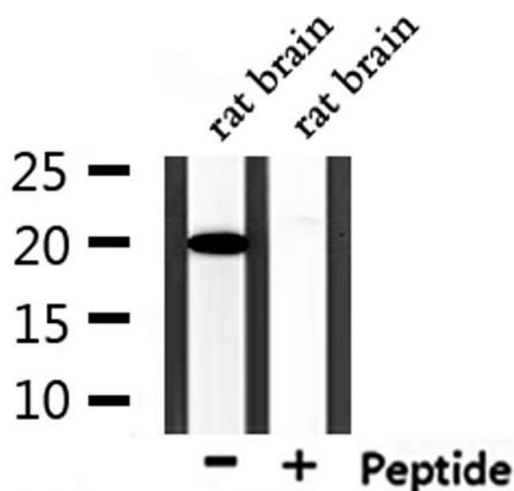
Western Blotting

Image 1. Western blot analysis on HepG2 cell lysate using KAD6 Antibody, *The lane on the left is treated with the antigen-specific peptide.*



Immunofluorescence (fixed cells)

Image 2. ABIN6266953 staining HepG2 by IF/ICC. The sample were fixed with PFA and permeabilized in 0.1% Triton X-100, then blocked in 10% serum for 45 minutes at 25°C. The primary antibody was diluted at 1/200 and incubated with the sample for 1 hour at 37°C. An Alexa Fluor 594 conjugated goat anti-rabbit IgG (H+L) Ab, diluted at 1/600, was used as the secondary antibody.



Western Blotting

Image 3. Western blot analysis of extracts from rat brain, using KAD6 Antibody.