

Datasheet for ABIN6262746
anti-KCNH6 antibody (C-Term)[Go to Product page](#)

1 Image

Overview

Quantity:	100 µL
Target:	KCNH6
Binding Specificity:	C-Term
Reactivity:	Human, Rat, Mouse
Host:	Rabbit
Clonality:	Polyclonal
Conjugate:	This KCNH6 antibody is un-conjugated
Application:	Western Blotting (WB), ELISA

Product Details

Immunogen:	A synthesized peptide derived from human KCNH6, corresponding to a region within C-terminal amino acids.
Isotype:	IgG
Specificity:	KCNH6 Antibody detects endogenous levels of total KCNH6.
Predicted Reactivity:	Horse,Rabbit
Purification:	The antiserum was purified by peptide affinity chromatography using SulfoLink™ Coupling Resin (Thermo Fisher Scientific).

Target Details

Target:	KCNH6
---------	-------

Target Details

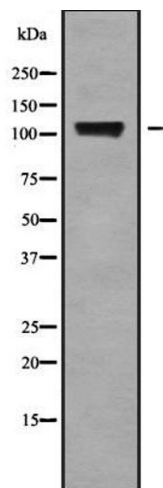
Alternative Name:	KCNH6 (KCNH6 Products)
Background:	Description: Pore-forming (alpha) subunit of voltage-gated potassium channel. Elicits a slowly activating, rectifying current (By similarity). Channel properties may be modulated by cAMP and subunit assembly. Gene: KCNH6
Molecular Weight:	110 kDa
Gene ID:	81033
UniProt:	Q9H252

Application Details

Application Notes:	WB 1:1000-3000, ELISA(peptide) 1:20000-1:40000
Restrictions:	For Research Use only

Handling

Format:	Liquid
Concentration:	1 mg/mL
Buffer:	Rabbit IgG in phosphate buffered saline , pH 7.4, 150 mM NaCl, 0.02 % sodium azide and 50 % glycerol.
Preservative:	Sodium azide
Precaution of Use:	This product contains Sodium azide: a POISONOUS AND HAZARDOUS SUBSTANCE which should be handled by trained staff only.
Storage:	-20 °C
Storage Comment:	Store at -20 °C. Stable for 12 months from date of receipt.
Expiry Date:	12 months



Western Blotting

Image 1. Western blot analysis of KCNH6 using COLO205 whole cell lysates