

Datasheet for ABIN6262753
anti-KCNJ8 antibody



[Go to Product page](#)

1 Image

Overview

Quantity:	100 µL
Target:	KCNJ8
Reactivity:	Human, Rat, Mouse, Rabbit
Host:	Rabbit
Clonality:	Polyclonal
Conjugate:	This KCNJ8 antibody is un-conjugated
Application:	Western Blotting (WB), ELISA

Product Details

Immunogen:	A synthesized peptide derived from human KCNJ8
Isotype:	IgG
Specificity:	KCNJ8 Antibody detects endogenous levels of total KCNJ8
Cross-Reactivity:	Human, Mouse (Murine), Rabbit, Rat (Rattus)
Purification:	The antiserum was purified by peptide affinity chromatography using SulfoLink™ Coupling Resin (Thermo Fisher Scientific).

Target Details

Target:	KCNJ8
Alternative Name:	KCNJ8 (KCNJ8 Products)
Background:	Description: This potassium channel is controlled by G proteins. Inward rectifier potassium

Target Details

channels are characterized by a greater tendency to allow potassium to flow into the cell rather than out of it. Their voltage dependence is regulated by the concentration of extracellular potassium, as external potassium is raised, the voltage range of the channel opening shifts to more positive voltages. The inward rectification is mainly due to the blockage of outward current by internal magnesium. Can be blocked by external barium (By similarity).

Gene: KCNJ8

Molecular Weight: 48 kDa

Gene ID: 3764

UniProt: [Q15842](#)

Application Details

Application Notes: WB 1:1000-3000

Restrictions: For Research Use only

Handling

Format: Liquid

Concentration: 1 mg/mL

Buffer: Rabbit IgG in phosphate buffered saline , pH 7.4, 150 mM NaCl, 0.02 % sodium azide and 50 % glycerol.

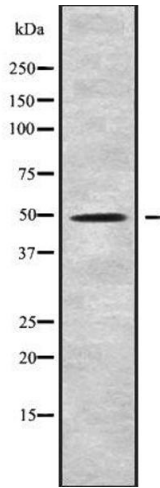
Preservative: Sodium azide

Precaution of Use: This product contains Sodium azide: a POISONOUS AND HAZARDOUS SUBSTANCE which should be handled by trained staff only.

Storage: -20 °C

Storage Comment: Store at -20 °C.Stable for 12 months from date of receipt

Expiry Date: 12 months



Western Blotting

Image 1. Western blot analysis of KCNJ8 using Jurkat whole cell lysates