

Datasheet for ABIN6262759
anti-KCNS1 antibody (C-Term)



[Go to Product page](#)

2 Images

Overview

Quantity:	100 µL
Target:	KCNS1
Binding Specificity:	C-Term
Reactivity:	Human, Mouse, Rat
Host:	Rabbit
Clonality:	Polyclonal
Conjugate:	This KCNS1 antibody is un-conjugated
Application:	Western Blotting (WB), ELISA, Immunocytochemistry (ICC), Immunofluorescence (IF), Immunohistochemistry (IHC)

Product Details

Immunogen:	A synthesized peptide derived from human KCNS1, corresponding to a region within C-terminal amino acids.
Isotype:	IgG
Specificity:	KCNS1 Antibody detects endogenous levels of total KCNS1.
Predicted Reactivity:	Rabbit,Dog
Purification:	The antiserum was purified by peptide affinity chromatography using SulfoLink™ Coupling Resin (Thermo Fisher Scientific).

Target Details

Target:	KCNS1
---------	-------

Target Details

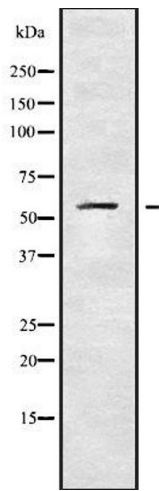
Alternative Name:	KCNS1 (KCNS1 Products)
Background:	Description: Potassium channel subunit that does not form functional channels by itself. Can form functional heterotetrameric channels with KCNB1 and KCNB2, modulates the delayed rectifier voltage-gated potassium channel activation and deactivation rates of KCNB1 and KCNB2 (PubMed:10484328). Gene: KCNS1
Molecular Weight:	58 kDa
Gene ID:	3787
UniProt:	Q96KK3

Application Details

Application Notes:	WB 1:1000-3000, IF/ICC 1:100-1:500, IHC 1:50-1:200, ELISA(peptide) 1:20000-1:40000
Restrictions:	For Research Use only

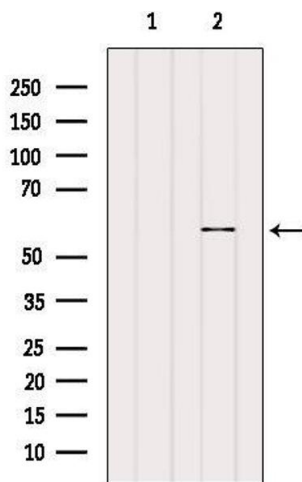
Handling

Format:	Liquid
Concentration:	1 mg/mL
Buffer:	Rabbit IgG in phosphate buffered saline , pH 7.4, 150 mM NaCl, 0.02 % sodium azide and 50 % glycerol.
Preservative:	Sodium azide
Precaution of Use:	This product contains Sodium azide: a POISONOUS AND HAZARDOUS SUBSTANCE which should be handled by trained staff only.
Storage:	-20 °C
Storage Comment:	Store at -20 °C. Stable for 12 months from date of receipt.
Expiry Date:	12 months



Western Blotting

Image 1. Western blot analysis of KCNS1 using LOVO whole cell lysates



Western Blotting

Image 2. Western blot analysis of extracts from Pc12, using KCNS1 Antibody. The lane on the left was treated with blocking peptide.