

Datasheet for ABIN6262762

anti-KCTD12 antibody (Internal Region)[Go to Product page](#)**2** Images

Overview

Quantity:	100 µL
Target:	KCTD12
Binding Specificity:	Internal Region
Reactivity:	Human, Mouse
Host:	Rabbit
Clonality:	Polyclonal
Conjugate:	This KCTD12 antibody is un-conjugated
Application:	Western Blotting (WB), Immunohistochemistry (IHC)

Product Details

Immunogen:	A synthesized peptide derived from human KCTD12, corresponding to a region within the internal amino acids.
Isotype:	IgG
Specificity:	KCTD12 Antibody detects endogenous levels of total KCTD12.
Predicted Reactivity:	Pig,Bovine,Sheep,Rabbit,Dog,Xenopus
Purification:	The antiserum was purified by peptide affinity chromatography using SulfoLink™ Coupling Resin (Thermo Fisher Scientific).

Target Details

Target:	KCTD12
---------	--------

Target Details

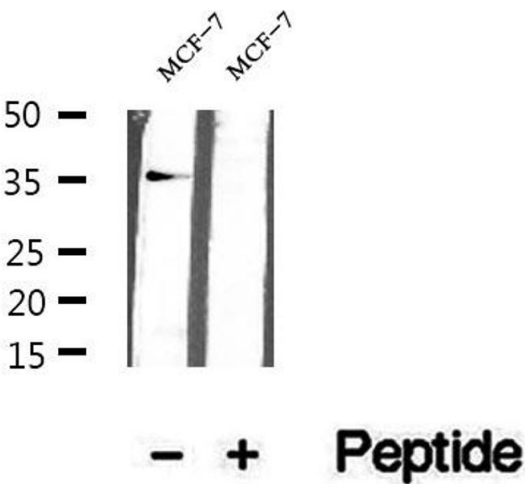
Alternative Name:	KCTD12 (KCTD12 Products)
Background:	Description: Auxiliary subunit of GABA-B receptors that determine the pharmacology and kinetics of the receptor response. Increases agonist potency and markedly alter the G-protein signaling of the receptors by accelerating onset and promoting desensitization (By similarity). Gene: KCTD12
Molecular Weight:	36 kDa
Gene ID:	115207
UniProt:	Q96CX2
Pathways:	Synaptic Membrane , Regulation of G-Protein Coupled Receptor Protein Signaling

Application Details

Application Notes:	WB 1:500-1:2000, IHC 1:50-1:200
Restrictions:	For Research Use only

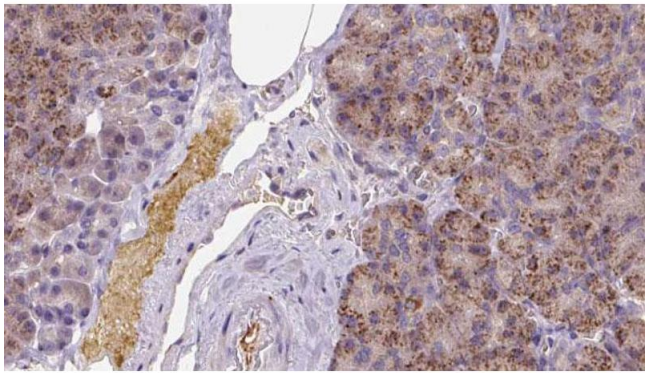
Handling

Format:	Liquid
Concentration:	1 mg/mL
Buffer:	Rabbit IgG in phosphate buffered saline , pH 7.4, 150 mM NaCl, 0.02 % sodium azide and 50 % glycerol.
Preservative:	Sodium azide
Precaution of Use:	This product contains Sodium azide: a POISONOUS AND HAZARDOUS SUBSTANCE which should be handled by trained staff only.
Storage:	-20 °C
Storage Comment:	Store at -20 °C. Stable for 12 months from date of receipt.
Expiry Date:	12 months



Western Blotting

Image 1. Western blot analysis of extracts of MCF-7 cells, using KCTD12 antibody.



Immunohistochemistry

Image 2. ABIN6273258 at 1/100 staining Human pancreas cancer tissue by IHC-P. The sample was formaldehyde fixed and a heat mediated antigen retrieval step in citrate buffer was performed. The sample was then blocked and incubated with the antibody for 1.5 hours at 22°C. An HRP conjugated goat anti-rabbit antibody was used as the secondary.