

Datasheet for ABIN6262763

anti-KDELR1 antibody (Internal Region)**3** Images[Go to Product page](#)

Overview

Quantity:	100 µL
Target:	KDELR1
Binding Specificity:	Internal Region
Reactivity:	Human, Mouse, Rat
Host:	Rabbit
Clonality:	Polyclonal
Conjugate:	This KDELR1 antibody is un-conjugated
Application:	Western Blotting (WB), ELISA, Immunofluorescence (IF), Immunocytochemistry (ICC), Immunohistochemistry (IHC)

Product Details

Immunogen:	A synthesized peptide derived from human KDEL, corresponding to a region within the internal amino acids.
Isotype:	IgG
Specificity:	KDEL Antibody detects endogenous levels of total KDEL.
Predicted Reactivity:	Pig,Bovine,Horse,Sheep,Rabbit,Xenopus
Purification:	The antiserum was purified by peptide affinity chromatography using SulfoLink™ Coupling Resin (Thermo Fisher Scientific).

Target Details

Target:	KDELR1
---------	--------

Target Details

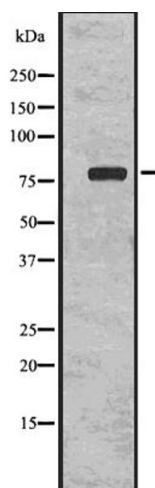
Alternative Name:	KDEL1 (KDEL1 Products)
Background:	<p>Description: Required for the retention of luminal endoplasmic reticulum resident proteins via vesicular recycling. This receptor recognizes the C-terminal K-D-E-L motif. COPI-coated transport intermediates, either in the form of round vesicles or as tubular processes, mediate retrograde traffic of the KDEL receptor-ligand complexes. Also required for normal vesicular traffic through the Golgi.</p> <p>Gene: KDEL1</p>
Molecular Weight:	78kDa
Gene ID:	10945
UniProt:	P24390
Pathways:	Maintenance of Protein Location

Application Details

Application Notes:	WB 1:1000-3000, IHC 1:200, IF/ICC 1:100-1:500, ELISA(peptide) 1:20000-1:40000
Restrictions:	For Research Use only

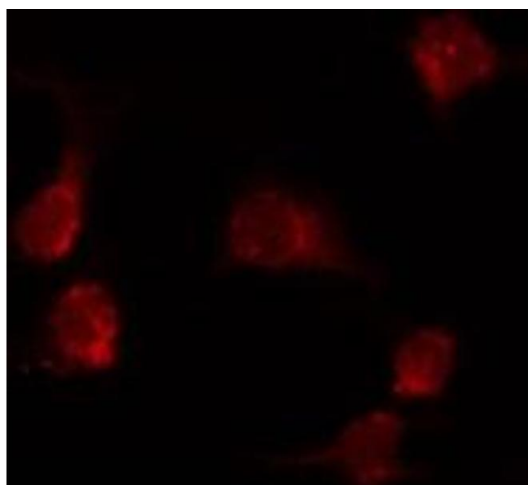
Handling

Format:	Liquid
Concentration:	1 mg/mL
Buffer:	Rabbit IgG in phosphate buffered saline , pH 7.4, 150 mM NaCl, 0.02 % sodium azide and 50 % glycerol.
Preservative:	Sodium azide
Precaution of Use:	This product contains Sodium azide: a POISONOUS AND HAZARDOUS SUBSTANCE which should be handled by trained staff only.
Storage:	-20 °C
Storage Comment:	Store at -20 °C. Stable for 12 months from date of receipt.
Expiry Date:	12 months



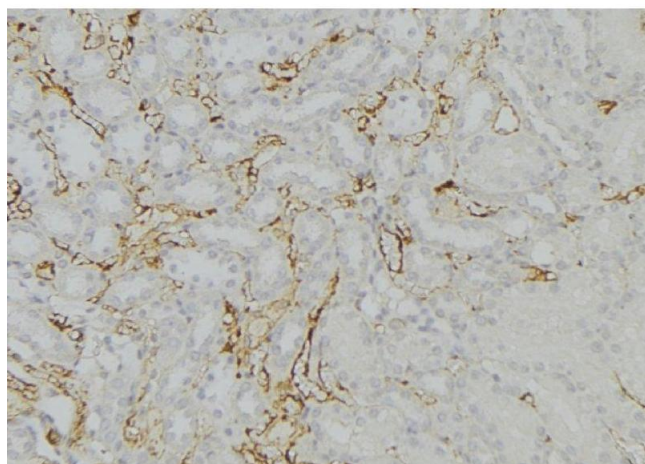
Western Blotting

Image 1. Western blot analysis of KDEL using K562 whole cell lysates



Immunofluorescence (fixed cells)

Image 2. ABIN6274020 staining MCF7 by IF/ICC. The sample were fixed with PFA and permeabilized in 0.1% Triton X-100, then blocked in 10% serum for 45 minutes at 25°C. The primary antibody was diluted at 1/200 and incubated with the sample for 1 hour at 37°C. An Alexa Fluor 594 conjugated goat anti-rabbit IgG (H+L) Ab, diluted at 1/600, was used as the secondary antibody.



Immunohistochemistry

Image 3. ABIN6274020 at 1/100 staining Mouse kidney tissue by IHC-P. The sample was formaldehyde fixed and a heat mediated antigen retrieval step in citrate buffer was performed. The sample was then blocked and incubated with the antibody for 1.5 hours at 22°C. An HRP conjugated goat anti-rabbit antibody was used as the secondary