



Datasheet for ABIN6262772

anti-KRT15 antibody



[Go to Product page](#)

3 Images

Overview

Quantity:	100 µL
Target:	KRT15
Reactivity:	Human, Rat, Mouse, Monkey
Host:	Rabbit
Clonality:	Polyclonal
Conjugate:	This KRT15 antibody is un-conjugated
Application:	Western Blotting (WB), Immunohistochemistry (IHC), Immunofluorescence (IF), ELISA, Immunocytochemistry (ICC)

Product Details

Immunogen:	A synthesized peptide derived from human Keratin 15
Isotype:	IgG
Specificity:	Keratin 15 Antibody detects endogenous levels of Keratin 15
Cross-Reactivity:	Human, Monkey, Mouse (Murine), Rat (Rattus)
Purification:	The antiserum was purified by peptide affinity chromatography using SulfoLink™ Coupling Resin (Thermo Fisher Scientific).

Target Details

Target:	KRT15
Alternative Name:	Keratin 15 (KRT15 Products)

Target Details

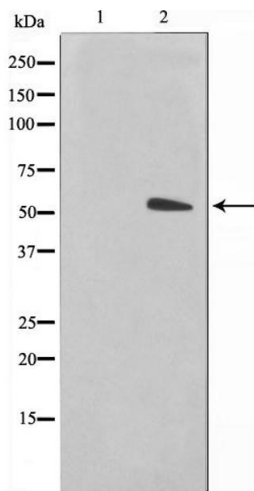
Background:	Description: There are two types of cytoskeletal and microfibrillar keratin: I (acidic, 40-55 kDa) and II (neutral to basic, 56-70 kDa). Gene: KRT15
Molecular Weight:	50kDa
Gene ID:	3866
UniProt:	P19012

Application Details

Application Notes:	WB 1:500-1:2000 IHC 1:50-1:200, IF/ICC 1:100-1:500
Restrictions:	For Research Use only

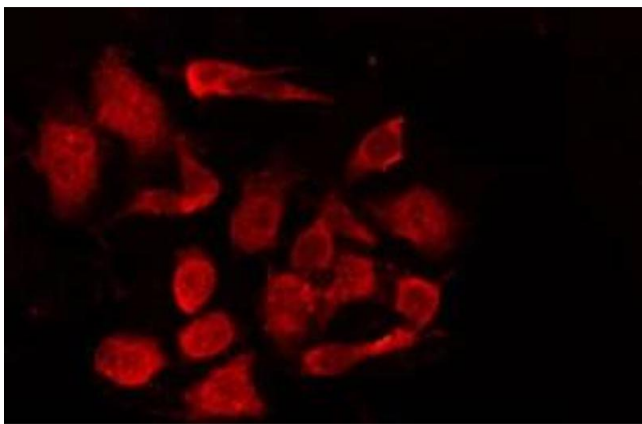
Handling

Format:	Liquid
Concentration:	1 mg/mL
Buffer:	Rabbit IgG in phosphate buffered saline , pH 7.4, 150 mM NaCl, 0.02 % sodium azide and 50 % glycerol.
Preservative:	Sodium azide
Precaution of Use:	This product contains Sodium azide: a POISONOUS AND HAZARDOUS SUBSTANCE which should be handled by trained staff only.
Storage:	-20 °C
Storage Comment:	Store at -20 °C.Stable for 12 months from date of receipt
Expiry Date:	12 months



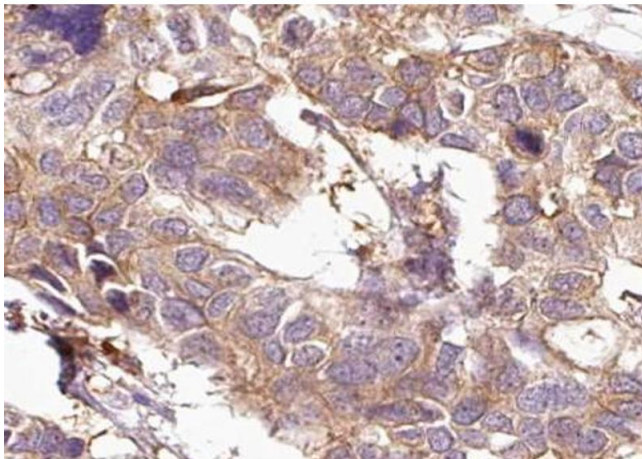
Western Blotting

Image 1. Western blot analysis on COS7 cell lysate using Keratin 15 Antibody, *The lane on the left is treated with the antigen-specific peptide.*



Immunofluorescence (fixed cells)

Image 2. ABIN6267008 staining COS7 by IF/ICC. The sample were fixed with PFA and permeabilized in 0.1% Triton X-100, then blocked in 10% serum for 45 minutes at 25°C. The primary antibody was diluted at 1/200 and incubated with the sample for 1 hour at 37°C. An Alexa Fluor 594 conjugated goat anti-rabbit IgG (H+L) Ab, diluted at 1/600, was used as the secondary antibody.



Immunohistochemistry

Image 3. ABIN6267008 at 1/100 staining human Breast tissue sections by IHC-P. The tissue was formaldehyde fixed and a heat mediated antigen retrieval step in citrate buffer was performed. The tissue was then blocked and incubated with the antibody for 1.5 hours at 22°C. An HRP conjugated goat anti-rabbit antibody was used as the secondary.