



[Go to Product page](#)

Datasheet for ABIN6262790

anti-KRT9 antibody (Internal Region)

3 Images

Overview

| | |
|----------------------|--|
| Quantity: | 100 µL |
| Target: | KRT9 |
| Binding Specificity: | Internal Region |
| Reactivity: | Human, Mouse, Rat |
| Host: | Rabbit |
| Clonality: | Polyclonal |
| Conjugate: | This KRT9 antibody is un-conjugated |
| Application: | Western Blotting (WB), Immunohistochemistry (IHC), ELISA, Immunocytochemistry (ICC), Immunofluorescence (IF) |

Product Details

| | |
|-----------------------|---|
| Immunogen: | A synthesized peptide derived from human Cytokeratin 9, corresponding to a region within the internal amino acids. |
| Isotype: | IgG |
| Specificity: | Cytokeratin 9 Antibody detects endogenous levels of total Cytokeratin 9. |
| Predicted Reactivity: | Bovine, Sheep, Dog |
| Purification: | The antiserum was purified by peptide affinity chromatography using SulfoLink™ Coupling Resin (Thermo Fisher Scientific). |

Target Details

| | |
|---------|------|
| Target: | KRT9 |
|---------|------|

Target Details

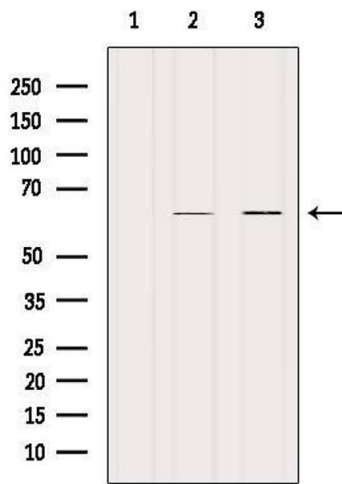
| | |
|-------------------|--|
| Alternative Name: | KRT9 (KRT9 Products) |
| Background: | Description: May serve an important special function either in the mature palmar and plantar skin tissue or in the morphogenetic program of the formation of these tissues. Plays a role in keratin filament assembly. Gene: KRT9 |
| Molecular Weight: | 62 kDa |
| Gene ID: | 3857 |
| UniProt: | P35527 |

Application Details

| | |
|--------------------|---|
| Application Notes: | WB 1:1000-3000, IHC 1:200, IF/ICC 1:100-1:500, ELISA(peptide) 1:20000-1:40000 |
| Restrictions: | For Research Use only |

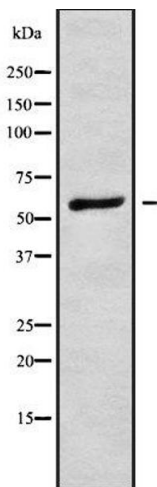
Handling

| | |
|--------------------|--|
| Format: | Liquid |
| Concentration: | 1 mg/mL |
| Buffer: | Rabbit IgG in phosphate buffered saline , pH 7.4, 150 mM NaCl, 0.02 % sodium azide and 50 % glycerol. |
| Preservative: | Sodium azide |
| Precaution of Use: | This product contains Sodium azide: a POISONOUS AND HAZARDOUS SUBSTANCE which should be handled by trained staff only. |
| Storage: | -20 °C |
| Storage Comment: | Store at -20 °C. Stable for 12 months from date of receipt. |
| Expiry Date: | 12 months |



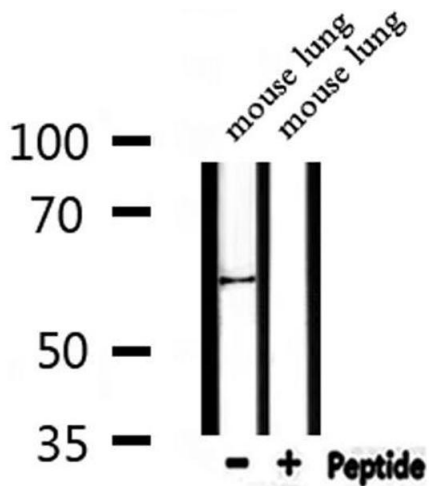
Western Blotting

Image 1. Western blot analysis of extracts from various samples, using Keratin 9 Antibody. Lane 1: Rat heart treated with blocking peptide; Lane 2: Rat heart; Lane 3: HeLa.



Western Blotting

Image 2. Western blot analysis of Keratin 9 using HuvEc whole cell lysates



Western Blotting

Image 3. Western blot analysis of extracts from mouse lung , using Keratin 9 Antibody.