



[Go to Product page](#)

Datasheet for ABIN6262802  
**anti-KIF12 antibody (N-Term)**

3 Images

Overview

Quantity:	100 µL
Target:	KIF12
Binding Specificity:	N-Term
Reactivity:	Human, Rat, Mouse
Host:	Rabbit
Clonality:	Polyclonal
Conjugate:	This KIF12 antibody is un-conjugated
Application:	Western Blotting (WB), Immunohistochemistry (IHC)

Product Details

Immunogen:	A synthesized peptide derived from human KIF12, corresponding to a region within N-terminal amino acids.
Isotype:	IgG
Specificity:	KIF12 Antibody detects endogenous levels of total KIF12.
Predicted Reactivity:	Pig,Bovine,Horse,Sheep,Rabbit,Dog
Purification:	The antiserum was purified by peptide affinity chromatography using SulfoLink™ Coupling Resin (Thermo Fisher Scientific).

Target Details

Target:	KIF12
---------	-------

## Target Details

---

Alternative Name: KIF12 ([KIF12 Products](#))

Background: Gene: KIF12

Molecular Weight: 55-65 kDa

Gene ID: 113220

UniProt: [Q96FN5](#)

## Application Details

---

Application Notes: WB 1:500-1:2000, IHC 1:50-1:200

Restrictions: For Research Use only

## Handling

---

Format: Liquid

Concentration: 1 mg/mL

Buffer: Rabbit IgG in phosphate buffered saline , pH 7.4, 150 mM NaCl, 0.02 % sodium azide and 50 % glycerol.

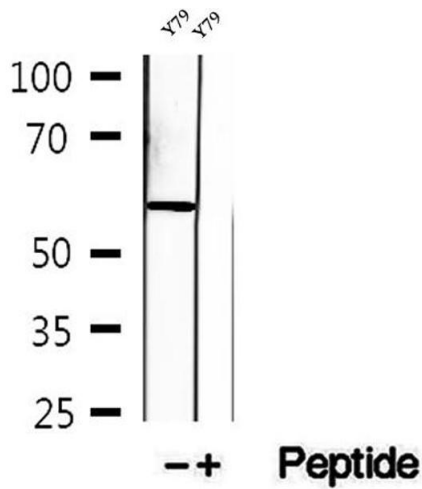
Preservative: Sodium azide

Precaution of Use: This product contains Sodium azide: a POISONOUS AND HAZARDOUS SUBSTANCE which should be handled by trained staff only.

Storage: -20 °C

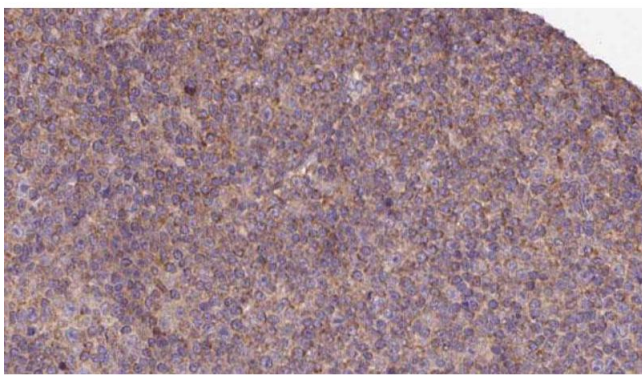
Storage Comment: Store at -20 °C. Stable for 12 months from date of receipt.

Expiry Date: 12 months



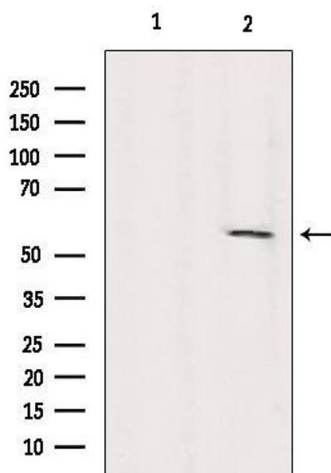
### Western Blotting

**Image 1.** Western blot analysis of extracts of Y79 cells, using KIF12 antibody.



### Immunohistochemistry

**Image 2.** ABIN6273129 at 1/100 staining Human lymph cancer tissue by IHC-P. The sample was formaldehyde fixed and a heat mediated antigen retrieval step in citrate buffer was performed. The sample was then blocked and incubated with the antibody for 1.5 hours at 22°C. An HRP conjugated goat anti-rabbit antibody was used as the secondary.



### Western Blotting

**Image 3.** Western blot analysis of extracts from Sp2/0, using KIF12 Antibody. Lane 1 was treated with the blocking peptide.