



[Go to Product page](#)

Datasheet for ABIN6262803
anti-KIF13B antibody (C-Term)

2 Images

Overview

| | |
|----------------------|--|
| Quantity: | 100 µL |
| Target: | KIF13B |
| Binding Specificity: | C-Term |
| Reactivity: | Human, Mouse |
| Host: | Rabbit |
| Clonality: | Polyclonal |
| Conjugate: | This KIF13B antibody is un-conjugated |
| Application: | ELISA, Western Blotting (WB), Immunohistochemistry (IHC) |

Product Details

| | |
|-----------------------|---|
| Immunogen: | A synthesized peptide derived from human KIF13B, corresponding to a region within C-terminal amino acids. |
| Isotype: | IgG |
| Specificity: | KIF13B Antibody detects endogenous levels of total KIF13B. |
| Predicted Reactivity: | Dog |
| Purification: | The antiserum was purified by peptide affinity chromatography using SulfoLink™ Coupling Resin (Thermo Fisher Scientific). |

Target Details

| | |
|---------|--------|
| Target: | KIF13B |
|---------|--------|

Target Details

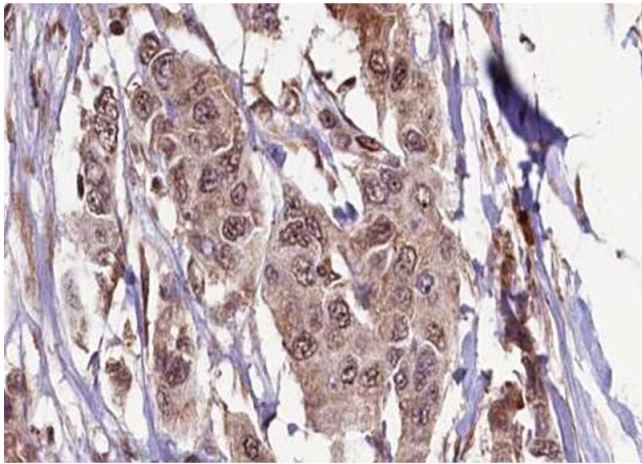
| | |
|-------------------|---|
| Alternative Name: | KIF13B (KIF13B Products) |
| Background: | Description: Involved in reorganization of the cortical cytoskeleton. Regulates axon formation by promoting the formation of extra axons. May be functionally important for the intracellular trafficking of MAGUKs and associated protein complexes. Gene: KIF13B |
| Molecular Weight: | 202kDa |
| Gene ID: | 23303 |
| UniProt: | Q9NQT8 |

Application Details

| | |
|--------------------|--|
| Application Notes: | WB 1:1000, IHC 1:200, ELISA(peptide) 1:20000-1:40000 |
| Restrictions: | For Research Use only |

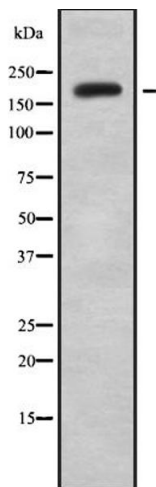
Handling

| | |
|--------------------|--|
| Format: | Liquid |
| Concentration: | 1 mg/mL |
| Buffer: | Rabbit IgG in phosphate buffered saline , pH 7.4, 150 mM NaCl, 0.02 % sodium azide and 50 % glycerol. |
| Preservative: | Sodium azide |
| Precaution of Use: | This product contains Sodium azide: a POISONOUS AND HAZARDOUS SUBSTANCE which should be handled by trained staff only. |
| Storage: | -20 °C |
| Storage Comment: | Store at -20 °C. Stable for 12 months from date of receipt. |
| Expiry Date: | 12 months |



Immunohistochemistry

Image 1. ABIN6272333 at 1/100 staining Human breast cancer tissue by IHC-P. The sample was formaldehyde fixed and a heat mediated antigen retrieval step in citrate buffer was performed. The sample was then blocked and incubated with the antibody for 1.5 hours at 22°C. An HRP conjugated goat anti-rabbit antibody was used as the secondary.



Western Blotting

Image 2. Western blot analysis of KIF13B using K562 whole cell lysates