

Datasheet for ABIN6262810
anti-KIF4B antibody (C-Term)[Go to Product page](#)

2 Images

Overview

| | |
|----------------------|--|
| Quantity: | 100 µL |
| Target: | KIF4B |
| Binding Specificity: | C-Term |
| Reactivity: | Human, Mouse |
| Host: | Rabbit |
| Clonality: | Polyclonal |
| Conjugate: | This KIF4B antibody is un-conjugated |
| Application: | Western Blotting (WB), ELISA, Immunohistochemistry (IHC) |

Product Details

| | |
|---------------|---|
| Immunogen: | A synthesized peptide derived from human KIF4B, corresponding to a region within C-terminal amino acids. |
| Isotype: | IgG |
| Specificity: | KIF4B Antibody detects endogenous levels of total KIF4B. |
| Purification: | The antiserum was purified by peptide affinity chromatography using SulfoLink™ Coupling Resin (Thermo Fisher Scientific). |

Target Details

| | |
|-------------------|--|
| Target: | KIF4B |
| Alternative Name: | KIF4B (KIF4B Products) |

Target Details

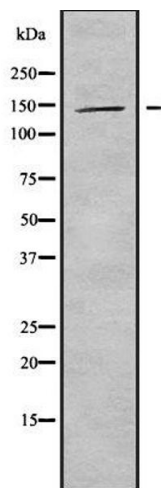
| | |
|-------------------|--|
| Background: | Description: Motor protein that translocates PRC1 to the plus ends of interdigitating spindle microtubules during the metaphase to anaphase transition, an essential step for the formation of an organized central spindle midzone and midbody and for successful cytokinesis. May play a role in mitotic chromosomal positioning and bipolar spindle stabilization (By similarity). Gene: KIF4B |
| Molecular Weight: | 140kDa |
| Gene ID: | 285643 |
| UniProt: | Q2VIQ3 |

Application Details

| | |
|--------------------|---|
| Application Notes: | WB 1:1000-3000, IHC 1:200, ELISA(peptide) 1:20000-1:40000 |
| Restrictions: | For Research Use only |

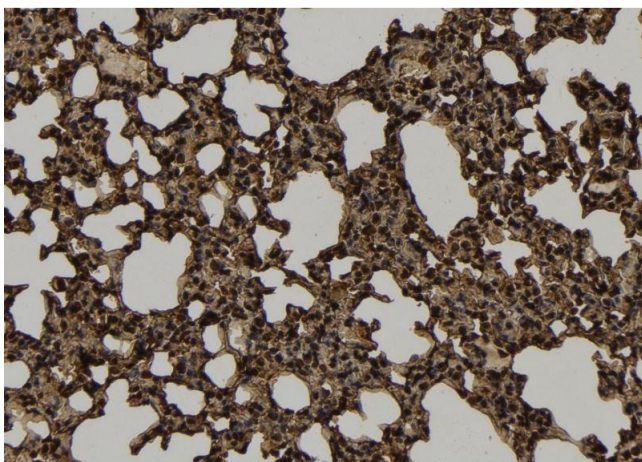
Handling

| | |
|--------------------|--|
| Format: | Liquid |
| Concentration: | 1 mg/mL |
| Buffer: | Rabbit IgG in phosphate buffered saline , pH 7.4, 150 mM NaCl, 0.02 % sodium azide and 50 % glycerol. |
| Preservative: | Sodium azide |
| Precaution of Use: | This product contains Sodium azide: a POISONOUS AND HAZARDOUS SUBSTANCE which should be handled by trained staff only. |
| Storage: | -20 °C |
| Storage Comment: | Store at -20 °C. Stable for 12 months from date of receipt. |
| Expiry Date: | 12 months |



Western Blotting

Image 1. Western blot analysis of KIF4B using HepG2 whole cell lysates



Immunohistochemistry

Image 2. ABIN6279298 at 1/100 staining Mouse lung tissue by IHC-P. The sample was formaldehyde fixed and a heat mediated antigen retrieval step in citrate buffer was performed. The sample was then blocked and incubated with the antibody for 1.5 hours at 22°C. An HRP conjugated goat anti-rabbit antibody was used as the secondary