



[Go to Product page](#)

Datasheet for ABIN6262813

anti-KIFC1 antibody (Internal Region)

4 Images

Overview

Quantity:	100 µL
Target:	KIFC1
Binding Specificity:	Internal Region
Reactivity:	Human, Mouse, Rat
Host:	Rabbit
Clonality:	Polyclonal
Conjugate:	This KIFC1 antibody is un-conjugated
Application:	Western Blotting (WB), ELISA, Immunofluorescence (IF), Immunohistochemistry (IHC), Immunocytochemistry (ICC)

Product Details

Immunogen:	A synthesized peptide derived from human KIFC1, corresponding to a region within the internal amino acids.
Isotype:	IgG
Specificity:	KIFC1 Antibody detects endogenous levels of total KIFC1.
Predicted Reactivity:	Pig,Bovine,Horse,Sheep,Rabbit,Dog
Purification:	The antiserum was purified by peptide affinity chromatography using SulfoLink™ Coupling Resin (Thermo Fisher Scientific).

Target Details

Target:	KIFC1
---------	-------

Target Details

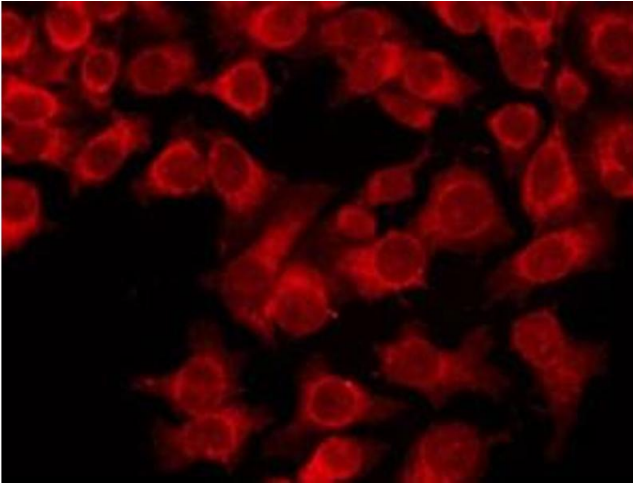
Alternative Name:	KIFC1 (KIFC1 Products)
Background:	Description: Minus end-directed microtubule-dependent motor required for bipolar spindle formation (PubMed:15843429). May contribute to movement of early endocytic vesicles (By similarity). Regulates cilium formation and structure (By similarity). Gene: KIFC1
Molecular Weight:	74kDa
Gene ID:	3833
UniProt:	Q9BW19

Application Details

Application Notes:	WB 1:1000-3000, IHC 1:200, IF/ICC, ELISA(peptide) 1:20000-1:40000
Restrictions:	For Research Use only

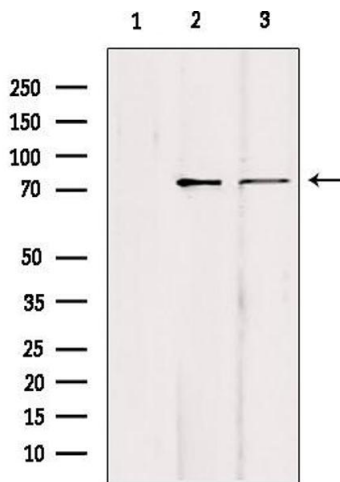
Handling

Format:	Liquid
Concentration:	1 mg/mL
Buffer:	Rabbit IgG in phosphate buffered saline , pH 7.4, 150 mM NaCl, 0.02 % sodium azide and 50 % glycerol.
Preservative:	Sodium azide
Precaution of Use:	This product contains Sodium azide: a POISONOUS AND HAZARDOUS SUBSTANCE which should be handled by trained staff only.
Storage:	-20 °C
Storage Comment:	Store at -20 °C. Stable for 12 months from date of receipt.
Expiry Date:	12 months



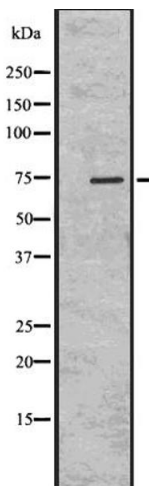
Immunofluorescence (fixed cells)

Image 1. ABIN6274021 staining HeLa by IF/ICC. The sample were fixed with PFA and permeabilized in 0.1% Triton X-100, then blocked in 10% serum for 45 minutes at 25°C. The primary antibody was diluted at 1/200 and incubated with the sample for 1 hour at 37°C. An Alexa Fluor 594 conjugated goat anti-rabbit IgG (H+L) Ab, diluted at 1/600, was used as the secondary antibody.



Western Blotting

Image 2. Western blot analysis of extracts from various samples, using KIFC1 Antibody. Lane 1: mouse brain treated with blocking peptide. Lane 2: mouse brain; Lane 3: hepg2;



Western Blotting

Image 3. Western blot analysis of KIFC1 using K562 whole cell lysates

Please check the [product details page](#) for more images. Overall 4 images are available for ABIN6262813.