



[Go to Product page](#)

Datasheet for ABIN6262831

anti-HHV-1 Thymidine Kinase antibody

2 Images

Overview

Quantity:	100 µL
Target:	HHV-1 Thymidine Kinase (HHV-1 TK)
Reactivity:	Human, Mouse
Host:	Rabbit
Clonality:	Polyclonal
Conjugate:	This HHV-1 Thymidine Kinase antibody is un-conjugated
Application:	ELISA, Western Blotting (WB)

Product Details

Immunogen:	A synthesized peptide derived from human KITH_HHV1S
Isotype:	IgG
Specificity:	KITH_HHV1S Antibody detects endogenous levels of total KITH_HHV1S
Cross-Reactivity:	Human, Mouse (Murine)
Purification:	The antiserum was purified by peptide affinity chromatography using SulfoLink™ Coupling Resin (Thermo Fisher Scientific).

Target Details

Target:	HHV-1 Thymidine Kinase (HHV-1 TK)
Alternative Name:	KITH_HHV1S (HHV-1 TK Products)
Molecular Weight:	41 kDa

Target Details

UniProt: [P06479](#)

Application Details

Application Notes: WB 1:1000-3000

Restrictions: For Research Use only

Handling

Format: Liquid

Concentration: 1 mg/mL

Buffer: Rabbit IgG in phosphate buffered saline , pH 7.4, 150 mM NaCl, 0.02 % sodium azide and 50 % glycerol.

Preservative: Sodium azide

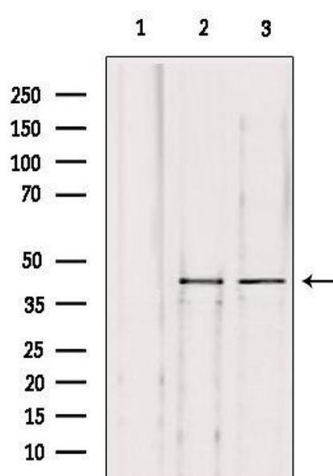
Precaution of Use: This product contains Sodium azide: a POISONOUS AND HAZARDOUS SUBSTANCE which should be handled by trained staff only.

Storage: -20 °C

Storage Comment: Store at -20 °C. Stable for 12 months from date of receipt

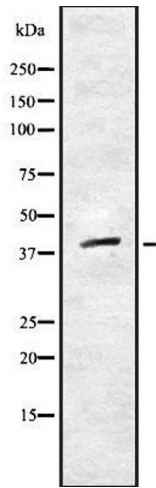
Expiry Date: 12 months

Images



Western Blotting

Image 1. Western blot analysis of extracts from various samples, using KITH_HHV1S Antibody. Lane 1: Hela treated with blocking peptide. Lane 2: Hela; Lane 3: mouse lung;



Western Blotting

Image 2. Western blot analysis of KITH_HHV1S using COLO205 whole cell lysates