



[Go to Product page](#)

Datasheet for ABIN6262855
anti-KLRC2/4 antibody

3 Images

Overview

Quantity:	100 µL
Target:	KLRC2/4 (LOC101904048)
Reactivity:	Human, Mouse, Rat
Host:	Rabbit
Clonality:	Polyclonal
Conjugate:	This KLRC2/4 antibody is un-conjugated
Application:	ELISA, Immunohistochemistry (IHC), Western Blotting (WB)

Product Details

Immunogen:	A synthesized peptide derived from human KLRC2/4
Isotype:	IgG
Specificity:	KLRC2/4 Antibody detects endogenous levels of total KLRC2/4
Cross-Reactivity:	Human, Mouse (Murine), Rat (Rattus)
Purification:	The antiserum was purified by peptide affinity chromatography using SulfoLink™ Coupling Resin (Thermo Fisher Scientific).

Target Details

Target:	KLRC2/4 (LOC101904048)
Alternative Name:	KLRC2/4 (LOC101904048 Products)
Background:	Description: Plays a role as a receptor for the recognition of MHC class I HLA-E molecules by

Target Details

NK cells and some cytotoxic T-cells.

Gene: KLRC2

Molecular Weight: 18 kDa

Gene ID: 3822

UniProt: [P26717](#), [O43908](#)

Application Details

Application Notes: WB 1:1000-3000 IHC 1:200

Restrictions: For Research Use only

Handling

Format: Liquid

Concentration: 1 mg/mL

Buffer: Rabbit IgG in phosphate buffered saline , pH 7.4, 150 mM NaCl, 0.02 % sodium azide and 50 % glycerol.

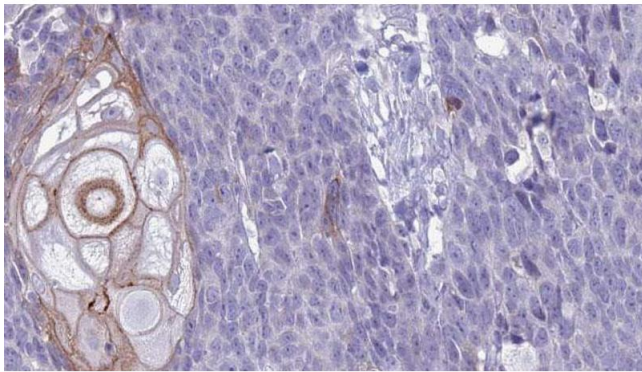
Preservative: Sodium azide

Precaution of Use: This product contains Sodium azide: a POISONOUS AND HAZARDOUS SUBSTANCE which should be handled by trained staff only.

Storage: -20 °C

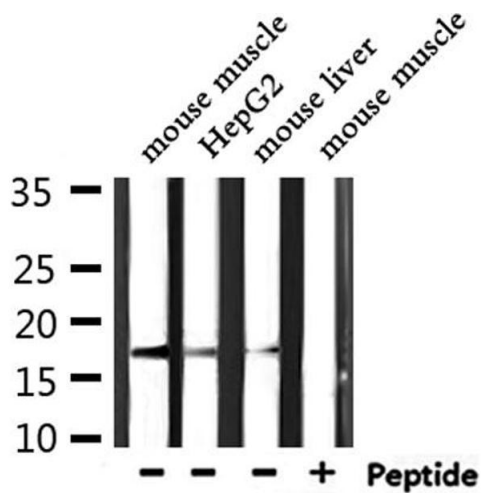
Storage Comment: Store at -20 °C.Stable for 12 months from date of receipt

Expiry Date: 12 months



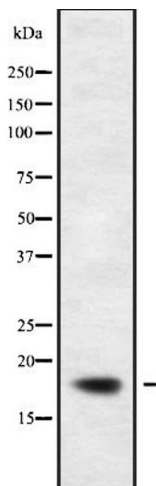
Immunohistochemistry

Image 1. ABIN6272629 at 1/100 staining Human Head and neck cancer tissue by IHC-P. The sample was formaldehyde fixed and a heat mediated antigen retrieval step in citrate buffer was performed. The sample was then blocked and incubated with the antibody for 1.5 hours at 22°C. An HRP conjugated goat anti-rabbit antibody was used as the secondary.



Western Blotting

Image 2. Western blot analysis of extracts from mouse muscle, HepG2, mouse liver, using KLRC2/4 Antibody.



Western Blotting

Image 3. Western blot analysis of KLRC2/4 using HeLa whole cell lysates