

Datasheet for ABIN6262871
anti-K-RAS antibody (C-Term)[Go to Product page](#)

2 Images

Overview

| | |
|----------------------|--|
| Quantity: | 100 µL |
| Target: | K-RAS (KRAS) |
| Binding Specificity: | C-Term |
| Reactivity: | Human, Rat, Mouse |
| Host: | Rabbit |
| Clonality: | Polyclonal |
| Conjugate: | This K-RAS antibody is un-conjugated |
| Application: | Western Blotting (WB), ELISA, Immunohistochemistry (IHC) |

Product Details

| | |
|-----------------------|---|
| Immunogen: | A synthesized peptide derived from human KRAS, corresponding to a region within C-terminal amino acids. |
| Isotype: | IgG |
| Specificity: | KRAS Antibody detects endogenous levels of total KRAS. |
| Predicted Reactivity: | Rabbit,Chicken |
| Purification: | The antiserum was purified by peptide affinity chromatography using SulfoLink™ Coupling Resin (Thermo Fisher Scientific). |

Target Details

| | |
|---------|--------------|
| Target: | K-RAS (KRAS) |
|---------|--------------|

Target Details

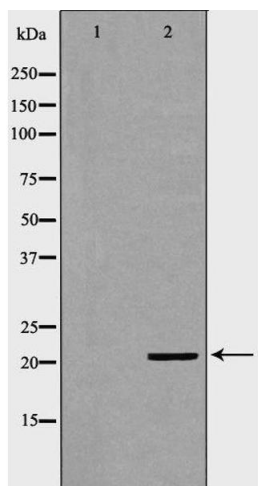
| | |
|-------------------|---|
| Alternative Name: | KRAS (KRAS Products) |
| Target Type: | Viral Protein |
| Background: | <p>Description: Ras proteins bind GDP/GTP and possess intrinsic GTPase activity. Plays an important role in the regulation of cell proliferation (PubMed:23698361, PubMed:22711838). Plays a role in promoting oncogenic events by inducing transcriptional silencing of tumor suppressor genes (TSGs) in colorectal cancer (CRC) cells in a ZNF304-dependent manner (PubMed:24623306).</p> <p>Gene: KRAS</p> |
| Molecular Weight: | 21kDa |
| Gene ID: | 3845 |
| UniProt: | P01116 |

Application Details

| | |
|--------------------|---|
| Application Notes: | WB 1:500-1:2000, IHC 1:50-1:200, ELISA(peptide) 1:20000-1:40000 |
| Restrictions: | For Research Use only |

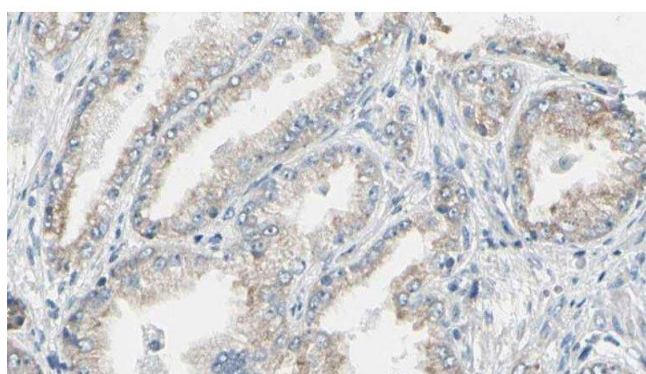
Handling

| | |
|--------------------|--|
| Format: | Liquid |
| Concentration: | 1 mg/mL |
| Buffer: | Rabbit IgG in phosphate buffered saline , pH 7.4, 150 mM NaCl, 0.02 % sodium azide and 50 % glycerol. |
| Preservative: | Sodium azide |
| Precaution of Use: | This product contains Sodium azide: a POISONOUS AND HAZARDOUS SUBSTANCE which should be handled by trained staff only. |
| Storage: | -20 °C |
| Storage Comment: | Store at -20 °C. Stable for 12 months from date of receipt. |
| Expiry Date: | 12 months |



Western Blotting

Image 1. Western blot analysis of brain lysate using KRAS antibody. The lane on the left is treated with the antigen-specific peptide.



Immunohistochemistry

Image 2. ABIN6276592 at 1/100 staining Human prostate tissue by IHC-P. The sample was formaldehyde fixed and a heat mediated antigen retrieval step in citrate buffer was performed. The sample was then blocked and incubated with the antibody for 1.5 hours at 22°C. An HRP conjugated goat anti-rabbit antibody was used as the secondary